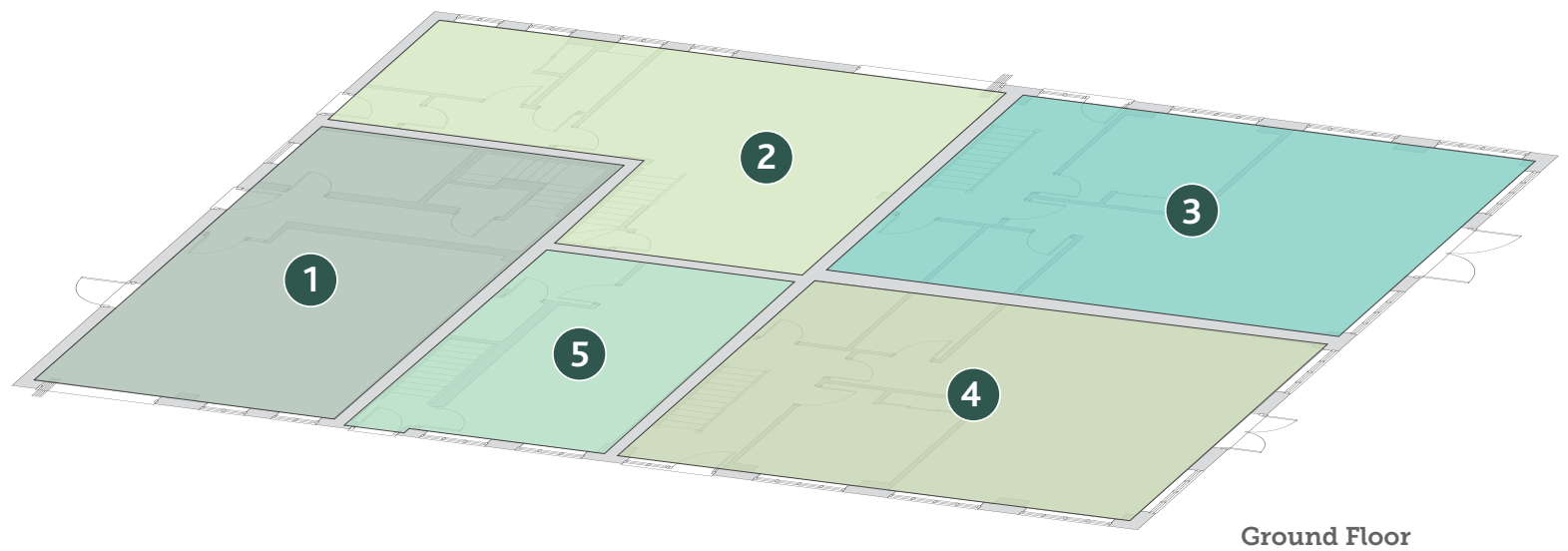
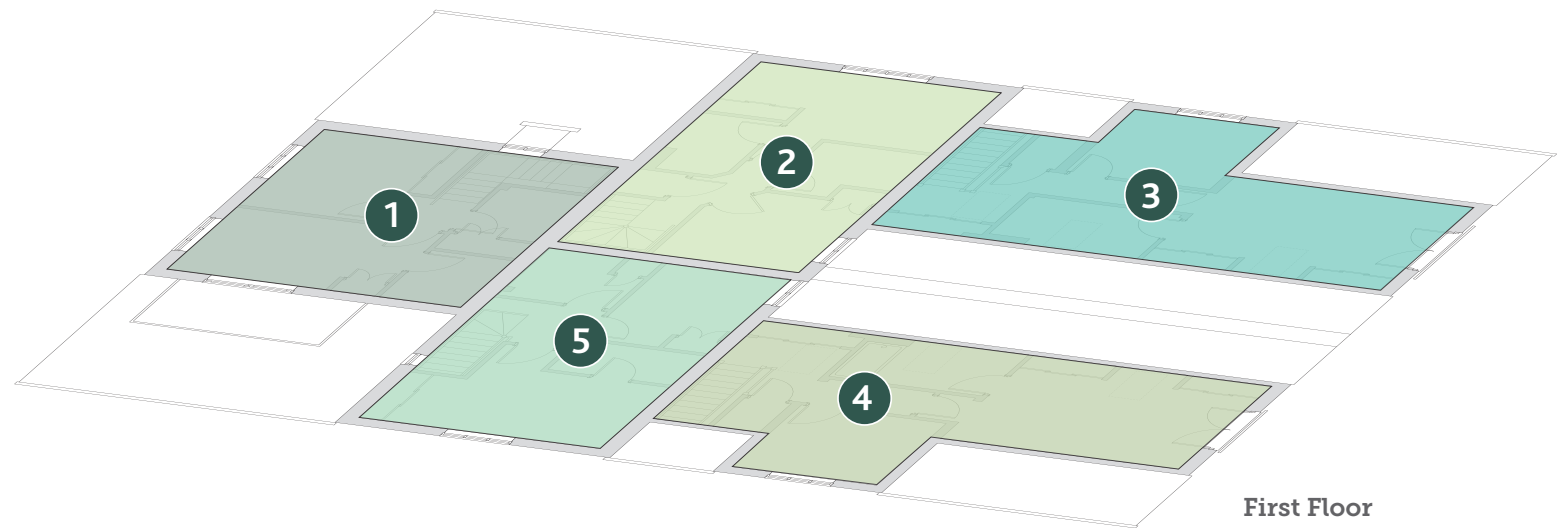
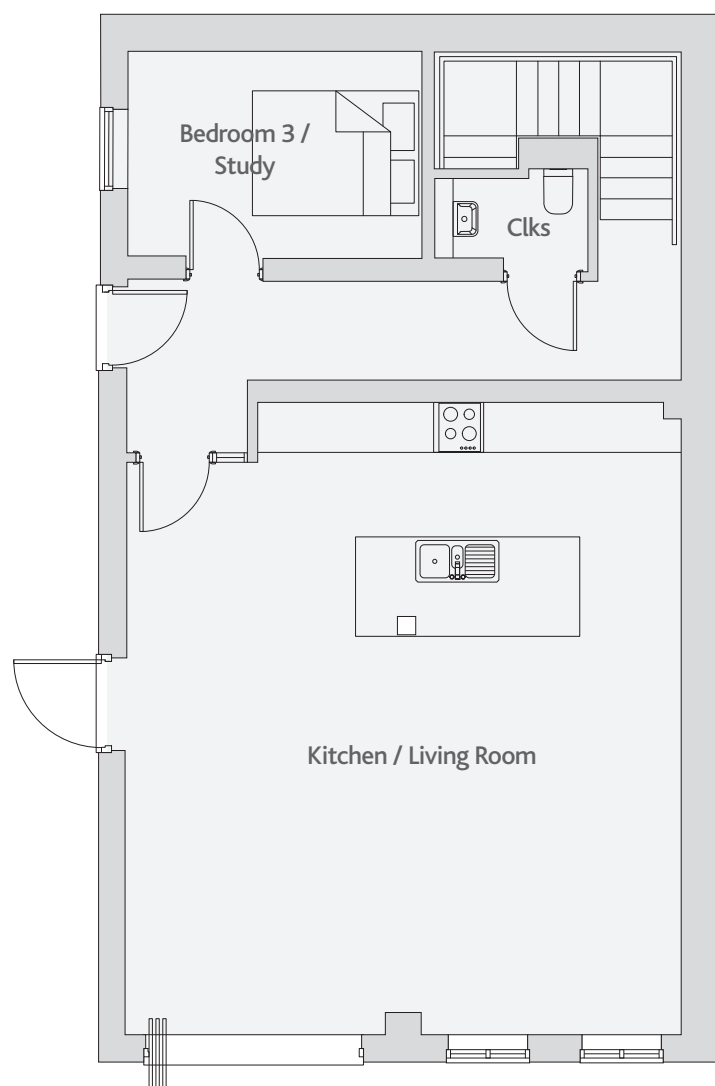


## Plot locator

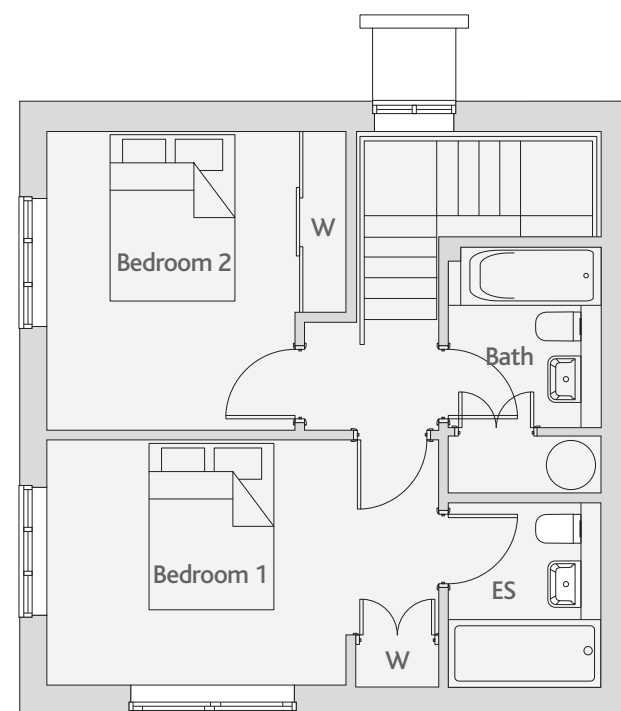
- 1** Foxgloves  
3 bedroom home
- 2** The Cranesbill  
3 bedroom home
- 3** The Ramson  
3 bedroom home
- 4** Bluebells  
3 bedroom home
- 5** The Harebell  
2 bedroom home



## 1 Foxgloves 3 bedroom home



Ground Floor



First Floor

### Ground Floor

Kitchen / Living Room	6.65m x 7.67m	21'10" x 25'2"
Bedroom 3 / Study	3.53m x 2.49m	11'7" x 8'2"

### First Floor

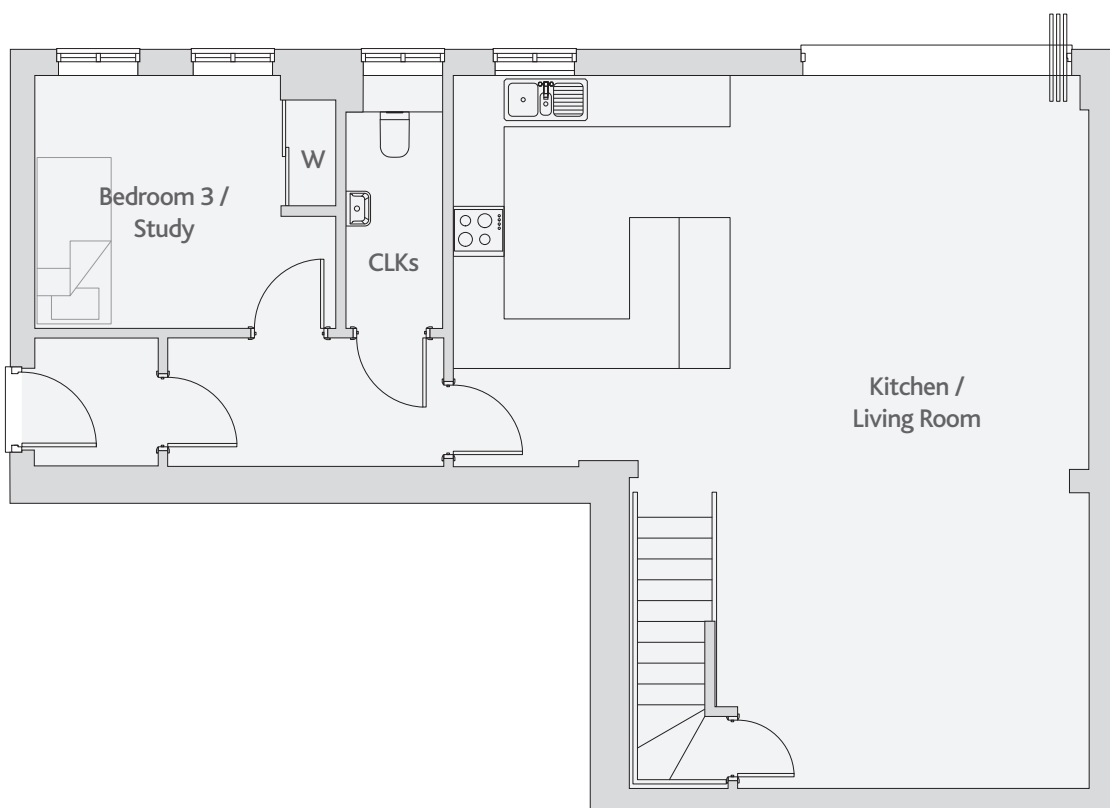
Bedroom 1	4.70m x 3.04m	15'5" x 10'0"
Bedroom 2	2.92m x 3.58m	9'7" x 11'9"

Clks - Cloakroom W - Wardrobe ES - En Suite

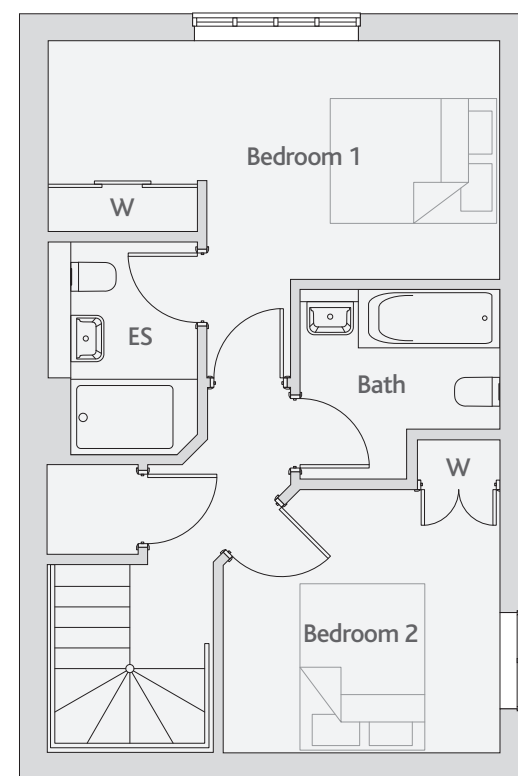
Please note: All dimensions shown are finished dimensions (plasterboard to plasterboard) and are the maximum dimension unless otherwise stated. Dimensions to bedroom do not include en-suites or wardrobes. Dimensions are given for guidance only and may vary and they are not to be relied upon for ordering floor coverings etc. Please consult a sales advisor.

## 2 The Cranesbill

### 3 bedroom home



**Ground Floor**



**First Floor**

#### Ground Floor

Kitchen / Living Room	7.64m x 8.54m	25'1" x 28'0"
Bedroom 3 / Study	3.60m x 3.02m	11'10" x 9'11"

#### First Floor

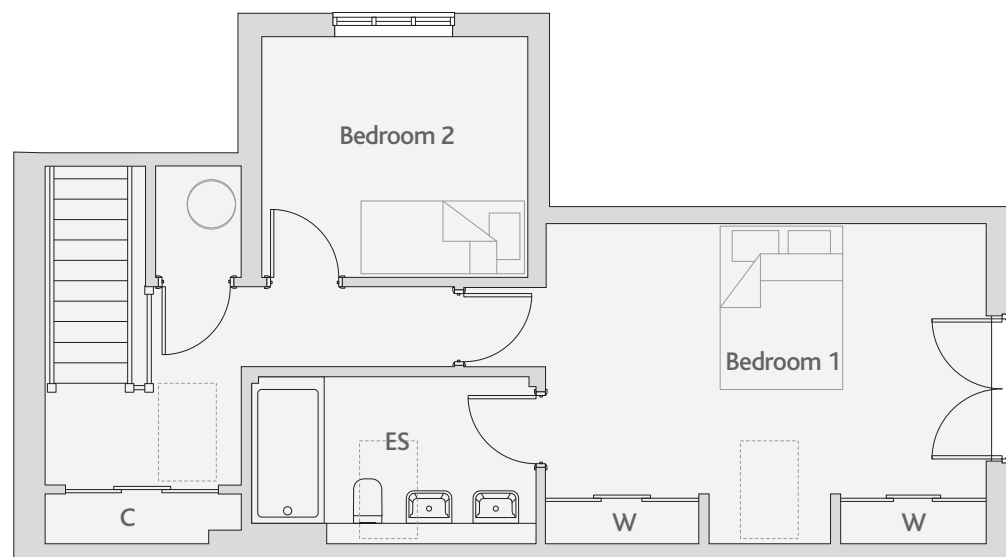
Bedroom 1	5.43m x 2.83m	18'2" x 9'3"
Bedroom 2	3.29m x 3.14m	10'10" x 10'4"

Clks - Cloakroom W - Wardrobe ES - En Suite

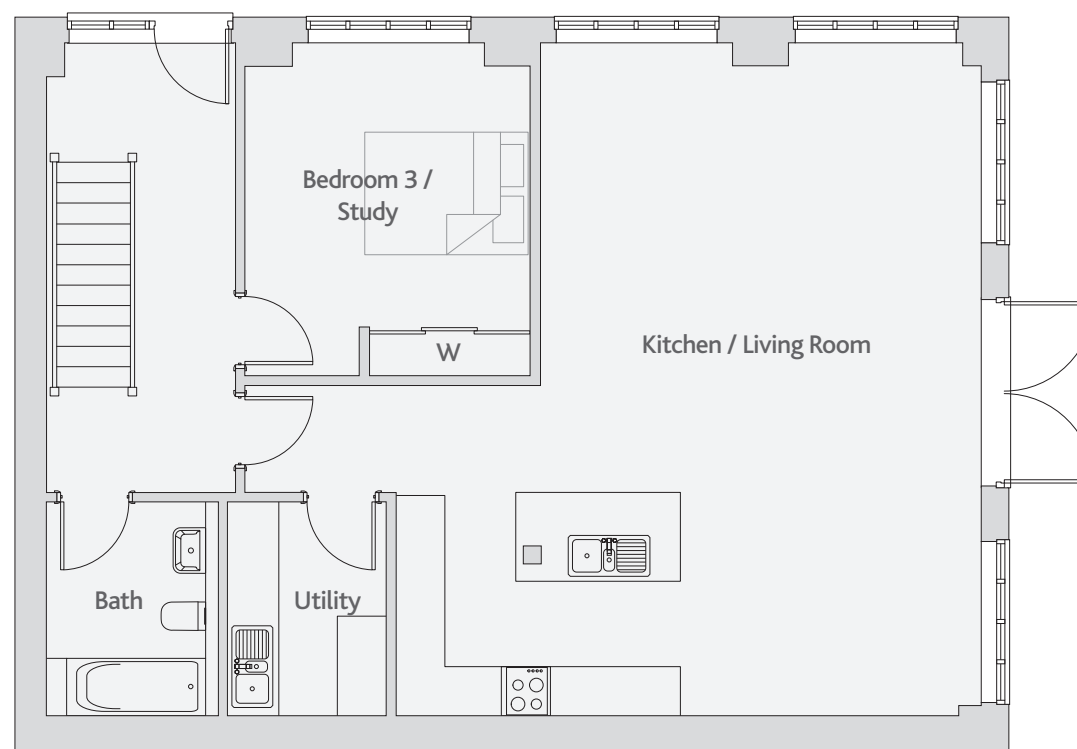
Please note: All dimensions shown are finished dimensions (plasterboard to plasterboard) and are the maximum dimension unless otherwise stated. Dimensions to bedroom do not include en-suites or wardrobes. Dimensions are given for guidance only and may vary and they are not to be relied upon for ordering floor coverings etc. Please consult a sales advisor.

## 3 The Ramson

### 3 bedroom home



First Floor



Ground Floor

#### Ground Floor

Kitchen / Living Room	7.15m x 8.00m	23'5" x 26'3"
Bedroom 3 / Study	3.27m x 2.94m	10'9" x 9'8"

#### First Floor

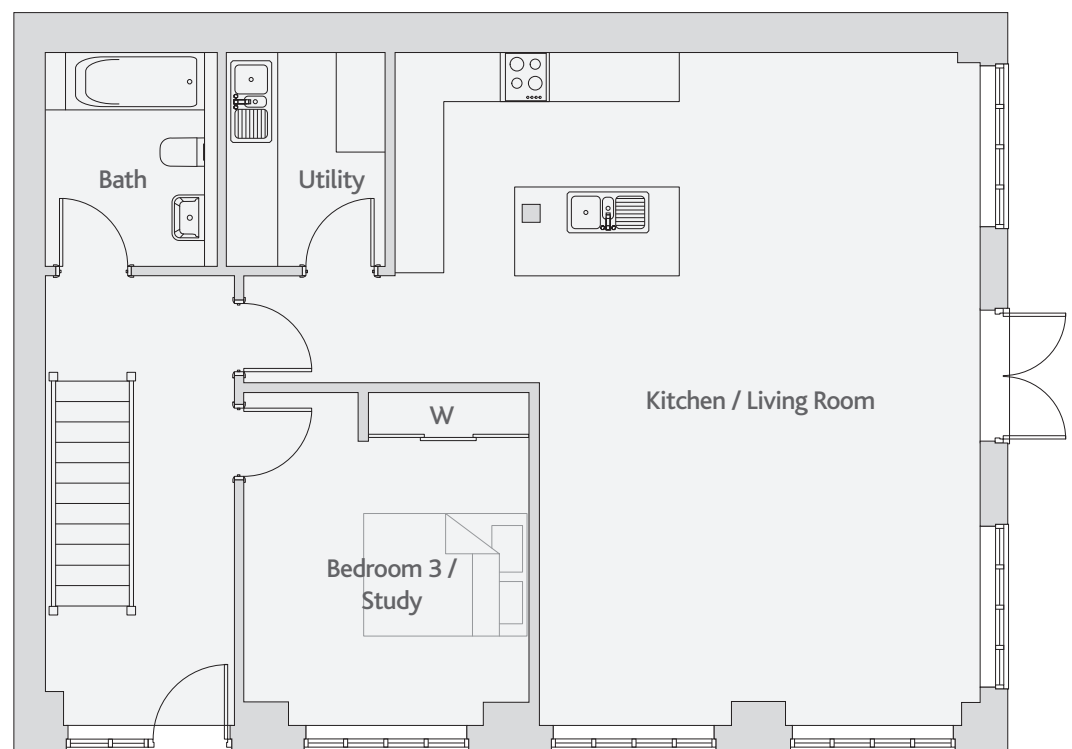
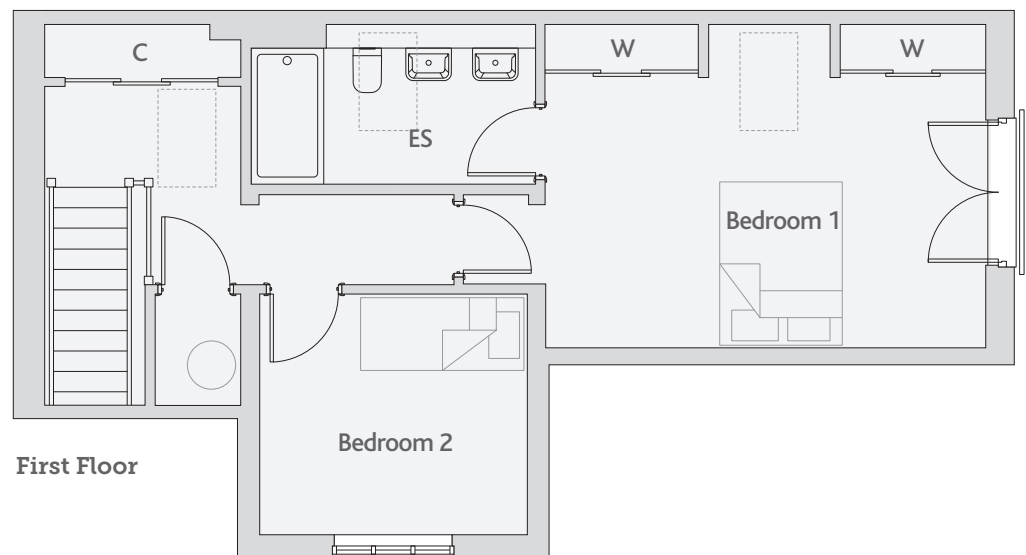
Bedroom 1	5.47m x 2.94m	17'11" x 9'8"
Bedroom 2	3.49m x 4.05m	11'5" x 13'3"

C - Cupboard W - Wardrobe ES - En Suite

Please note: All dimensions shown are finished dimensions (plasterboard to plasterboard) and are the maximum dimension unless otherwise stated. Dimensions to bedroom do not include en-suites or wardrobes. Dimensions are given for guidance only and may vary and they are not to be relied upon for ordering floor coverings etc. Please consult a sales advisor.

## 4 Bluebells

### 3 bedroom home



#### Ground Floor

Kitchen / Living Room	5.37m x 8.24m	17'7" x 24'7"
Bedroom 3 / Study	3.25m x 2.95m	10'8" x 9'8"

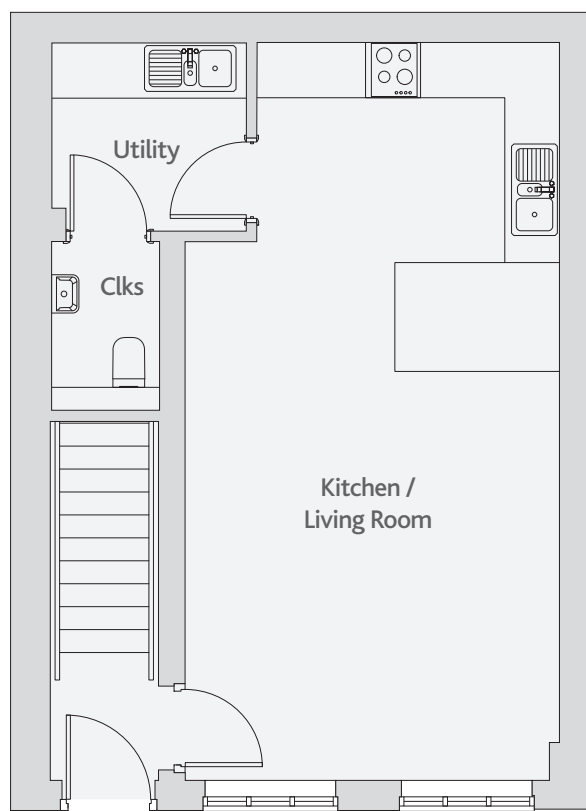
#### First Floor

Bedroom 1	5.44m x 4.01m	17'10" x 13'2"
Bedroom 2	3.49m x 4.06m	11'5" x 13'4"

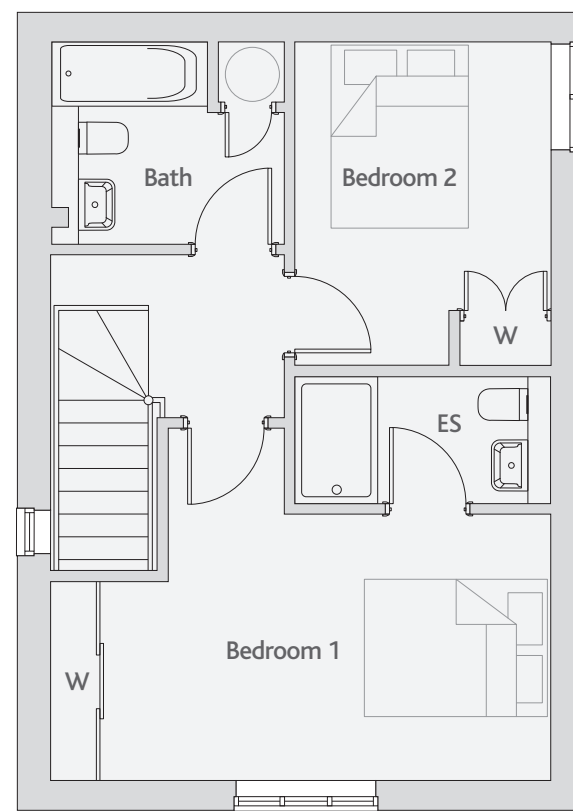
C - Cupboard W - Wardrobe ES - En Suite

Please note: All dimensions shown are finished dimensions (plasterboard to plasterboard) and are the maximum dimension unless otherwise stated. Dimensions to bedroom do not include en-suites or wardrobes. Dimensions are given for guidance only and may vary and they are not to be relied upon for ordering floor coverings etc. Please consult a sales advisor.

**5** The Harebell  
2 bedroom home



Ground Floor



First Floor

**Ground Floor**

Kitchen / Living Room    4.08m x 8.04m    13'5" x 26'4"

**First Floor**

Bedroom 1    5.48m x 2.86m    18'0" x 9'5"

Bedroom 2    2.80m x 3.53m    9'2" x 11'7"

Clks - Cloakroom    W - Wardrobe    ES - En Suite

Please note: All dimensions shown are finished dimensions (plasterboard to plasterboard) and are the maximum dimension unless otherwise stated. Dimensions to bedroom do not include en-suites or wardrobes. Dimensions are given for guidance only and may vary and they are not to be relied upon for ordering floor coverings etc. Please consult a sales advisor.