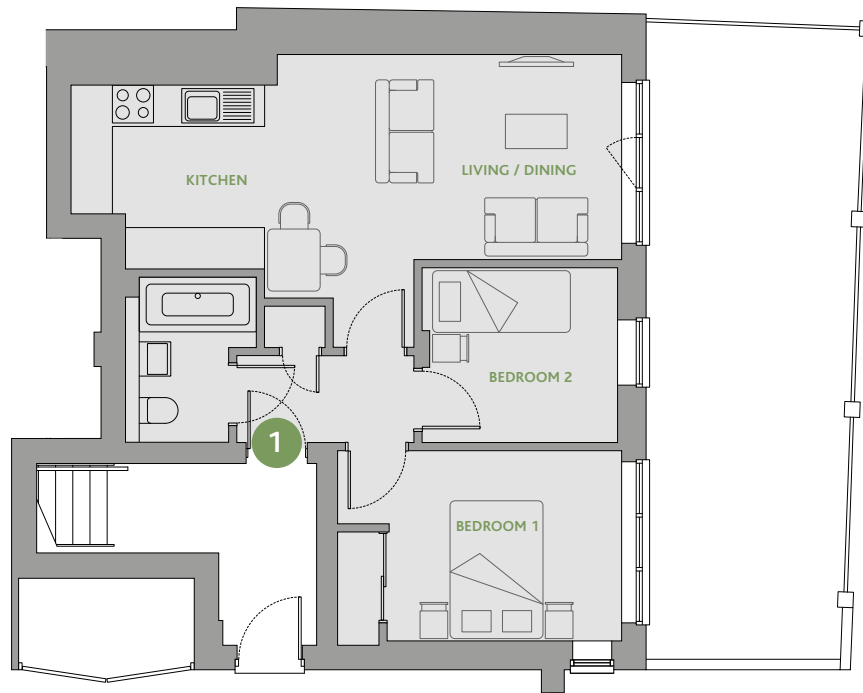


GROUND FLOOR

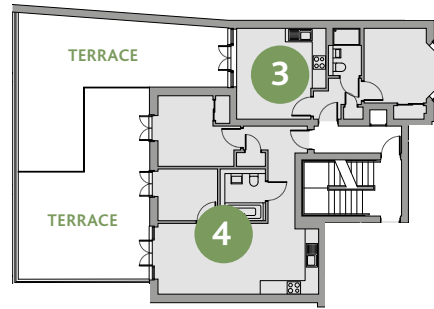


PLOT 1 - TWO BEDROOM APARTMENT

	<i>Metric</i>	<i>Imperial</i>
Kitchen	2.17m x 2.81m	7'1" x 9'3"
Living / Dining	4.26m x 5.19m	14'0" x 17'1"
Bedroom 1	2.77m x 4.13m	9'1" x 13'7"
Bedroom 2	2.54m x 2.84m	8'4" x 9'4"
Total gross internal floor area	53.1 sq m	571.6 sq ft

Please note: All dimensions shown are finished dimensions (plasterboard to plasterboard) and are the maximum dimension unless otherwise stated. Dimensions to bedroom do not include en-suites or wardrobes. Dimensions are given for guidance only and may vary and they are not to be relied upon for ordering floor coverings etc. Please consult a sales advisor.

FIRST FLOOR



PLOT 2 – ONE BEDROOM APARTMENT

	<i>Metric</i>	<i>Imperial</i>
Kitchen	2.07m x 2.92m	6'9" x 9'7"
Living / Dining	4.03m x 3.50m	13'3" x 11'6"
Bedroom	3.19m x 3.77m	10'6" x 12'5"
Total gross internal floor area	41.2 sq m	443.5 sq ft

PLOT 3 – ONE BEDROOM APARTMENT

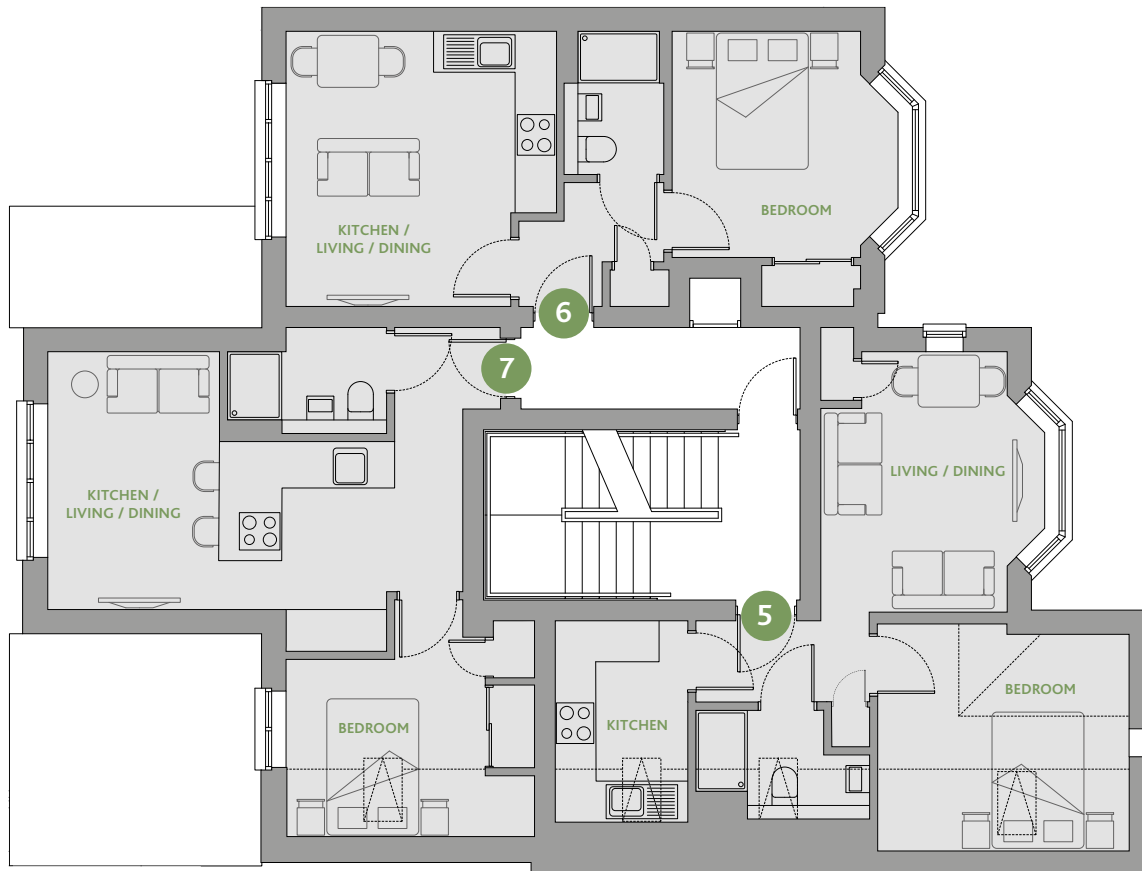
	<i>Metric</i>	<i>Imperial</i>
Kitchen	4.04m x 1.80m	13'3" x 5'11"
Living / Dining	4.04m x 2.17m	13'3" x 7'1"
Bedroom	3.32m x 3.32m	10'11" x 10'11"
Total gross internal floor area	34.2 sq m	368.1 sq ft
Terrace area	38.9 sq m	418.72 sq ft

PLOT 4 – ONE BEDROOM APARTMENT

	<i>Metric</i>	<i>Imperial</i>
Kitchen	3.15m x 2.60m	10'4" x 8'6"
Living / Dining	5.57m x 4.55m	18'3" x 14'11"
Bedroom	3.13m x 3.38m	10'3" x 11'1"
Total gross internal floor area	53.9 sq m	580.2 sq ft
Terrace area	38.4 sq m	413.33 sq ft

Please note: All dimensions shown are finished dimensions (plasterboard to plasterboard) and are the maximum dimension unless otherwise stated. Dimensions to bedroom do not include en-suites or wardrobes. Dimensions are given for guidance only and may vary and they are not to be relied upon for ordering floor coverings etc. Please consult a sales advisor.

SECOND FLOOR



PLOT 5 – ONE BEDROOM APARTMENT

	<i>Metric</i>	<i>Imperial</i>
Kitchen	2.76m x 1.95m	9'1" x 6'5"
Living / Dining	3.83m x 3.29m	12'7" x 10'10"
Bedroom	3.50m x 2.74m	11'6" x 9'0"
Total gross internal floor area	38.0 sq m	409.0 sq ft

PLOT 6 – ONE BEDROOM APARTMENT

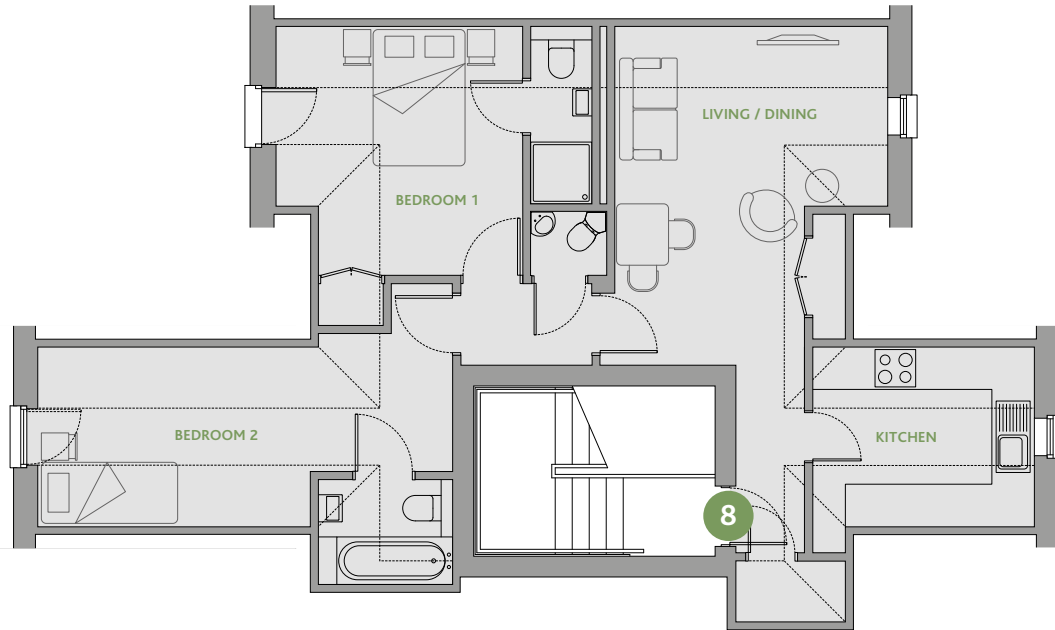
	<i>Metric</i>	<i>Imperial</i>
Kitchen	4.04m x 1.80m	13'3" x 5'11"
Living / Dining	4.04m x 2.17m	13'3" x 7'1"
Bedroom	3.32m x 3.32m	10'11" x 10'11"
Total gross internal floor area	34.2 sq m	368.1 sq ft

PLOT 7 – ONE BEDROOM APARTMENT

	<i>Metric</i>	<i>Imperial</i>
Kitchen	3.08m x 2.57m	10'1" x 8'5"
Living / Dining	3.79m x 2.52m	12'5" x 8'3"
Bedroom	2.21m x 3.65m	7'3" x 12'0"
Total gross internal floor area	36.7 sq m	395.0 sq ft

Please note: All dimensions shown are finished dimensions (plasterboard to plasterboard) and are the maximum dimension unless otherwise stated. Dimensions to bedroom do not include en-suites or wardrobes. Dimensions are given for guidance only and may vary and they are not to be relied upon for ordering floor coverings etc. Please consult a sales advisor.

THIRD FLOOR



PLOT 8 - 2 BEDROOM PENTHOUSE

	<i>Metric</i>	<i>Imperial</i>
Kitchen	2.04m x 3.38m	6'8" x 11'1"
Living / Dining	4.68m x 4.23m	15'4" x 13'11"
Bedroom 1	3.36m x 3.62m	11'0" x 11'11"
Bedroom 2	2.04m x 4.01m	6'8" x 13'2"
Total gross internal floor area	72.4 sq m	779.3 sq ft

Please note: All dimensions shown are finished dimensions (plasterboard to plasterboard) and are the maximum dimension unless otherwise stated. Dimensions to bedroom do not include en-suites or wardrobes. Dimensions are given for guidance only and may vary and they are not to be relied upon for ordering floor coverings etc. Please consult a sales advisor.

PARKING LAYOUT

