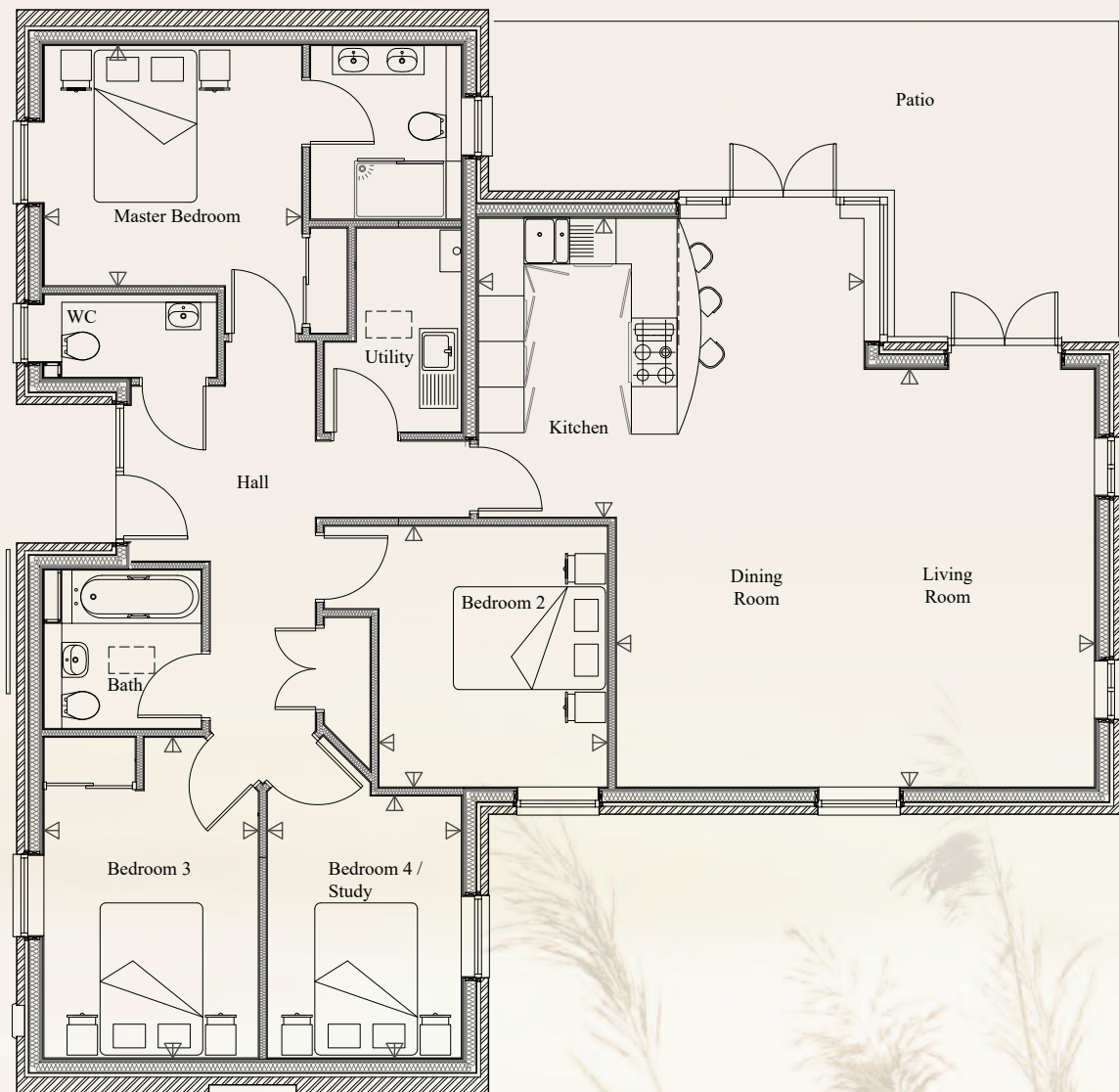


# N<sup>o</sup> 1

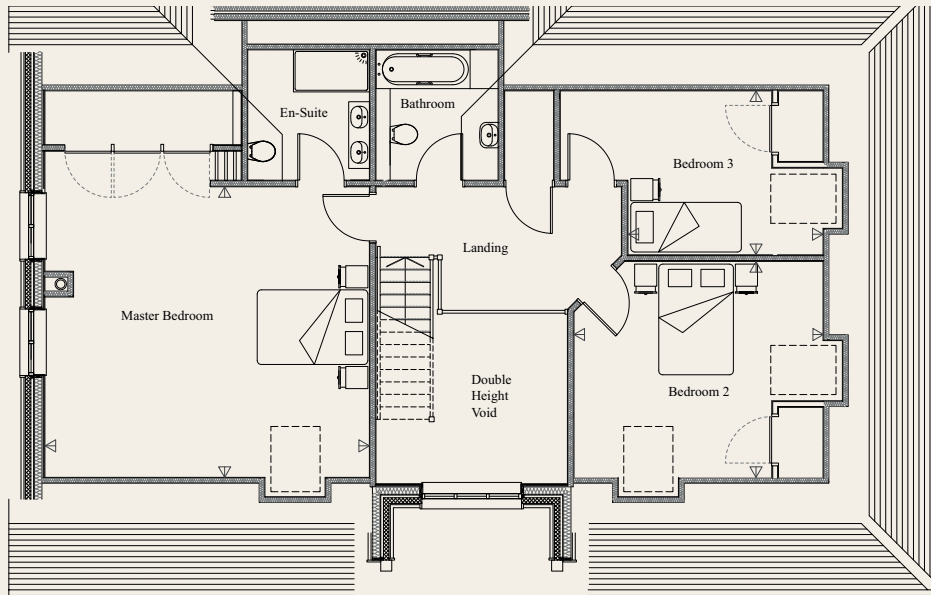


<b>Kitchen</b>	16'4 x 12'9	5007mm x 3930mm
<b>Dining/Living Room</b>	20'6 x 18'0	6290mm x 5490mm
<b>Master Bedroom</b>	11'1 x 10'4	3390mm x 3160mm
<b>Bedroom 2</b>	11'2 x 9'8	3430mm x 3000mm
<b>Bedroom 3</b>	13'8 x 9'2	4210mm x 2820mm
<b>Bedroom 4/Study</b>	11'3 x 8'4	3440mm x 2550mm

- *Magnificent vaulted kitchen/dining/living room*
- *Deep sash windows*
- *Double car barn*
- *Private courtyard entrance*
- *Secluded garden*



N<sup>o</sup> 2



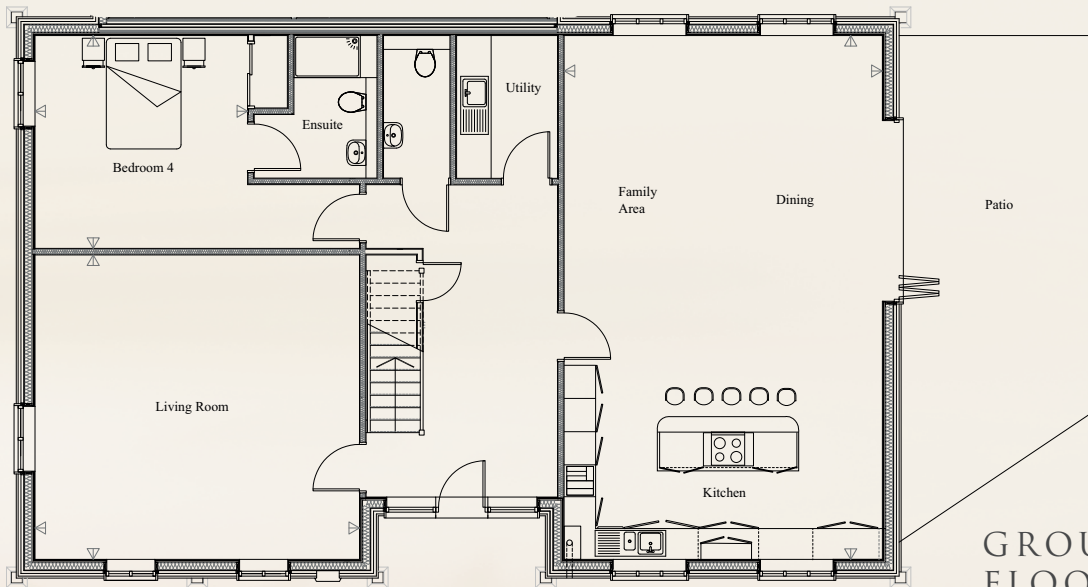
FIRST FLOOR

**GROUND FLOOR**

<b>Kitchen/Family/Dining Room</b>	31'1 x 18'9	9470mm x 5750mm
<b>Living Room</b>	19'2 x 18'0	5870mm x 5500mm
<b>Bedroom 4</b>	12'6 x 12'6	3850mm x 3840mm

**FIRST FLOOR**

<b>Master Bedroom</b>	19'2 x 17'2	5870mm x 5250mm
<b>Bedroom 2</b>	14'8 x 12'8	4500mm x 3900mm
<b>Bedroom 3</b>	11'6 x 9'7	3530mm x 2960mm



GROUND FLOOR

- *Magnificent double height atrium entrance hall*
- *Feature log burner*
- *Two parking spaces to the front and two garages to the rear*



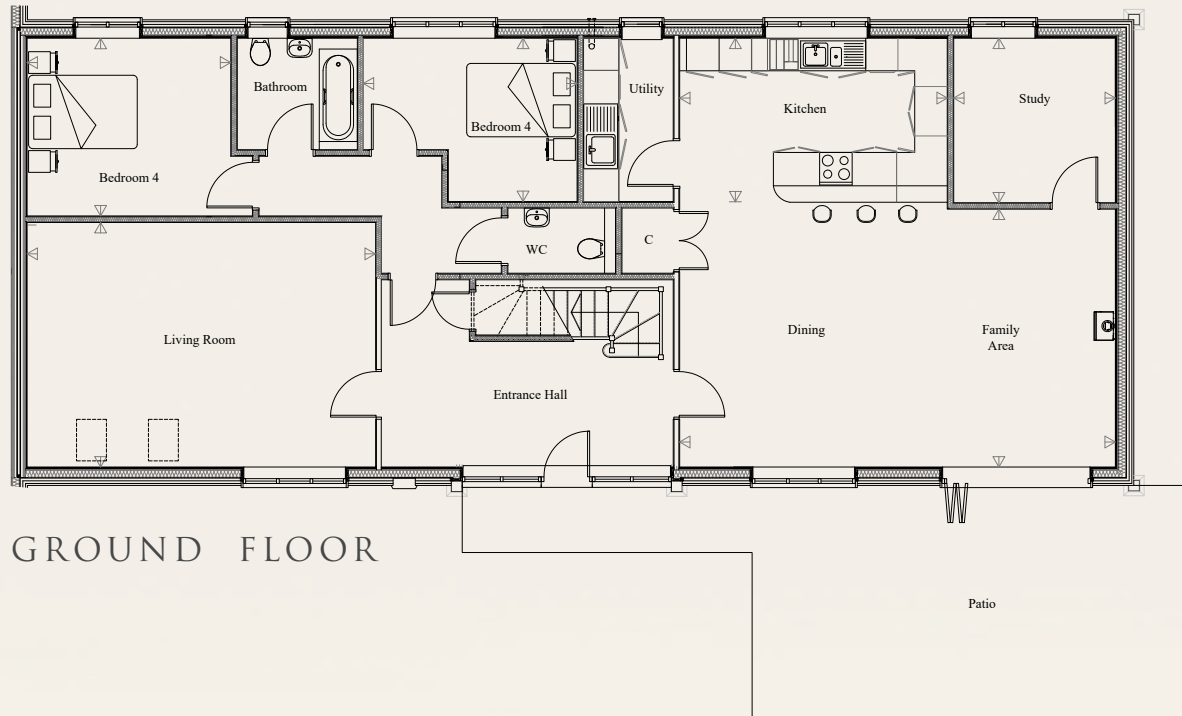
# Nº 3

## GROUND FLOOR

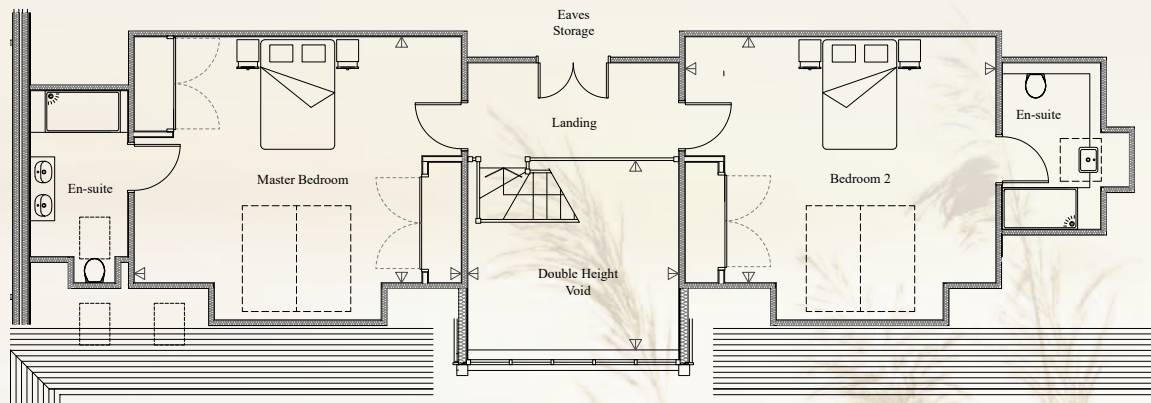
<b>Kitchen</b>	16'1 x 9'9	4930mm x 3020mm
<b>Family/Dining Room</b>	26'3 x 15'5	8020mm x 4740mm
<b>Living Room</b>	21'1 x 14'8	6420mm x 4500mm
<b>Study</b>	9'9 x 9'8	3030mm x 2980mm
<b>Bedroom 3</b>	12'3 x 10'7	3750mm x 3270mm
<b>Bedroom 4</b>	12'9 x 9'9	3930mm x 3010mm

## FIRST FLOOR

<b>Master Bedroom</b>	19'6 x 14'7	5970mm x 4490mm
<b>Bedroom 2</b>	19'6 x 14'7	5970mm x 4490mm



GROUND FLOOR



FIRST FLOOR

- *Stunning double height atrium entrance hall*

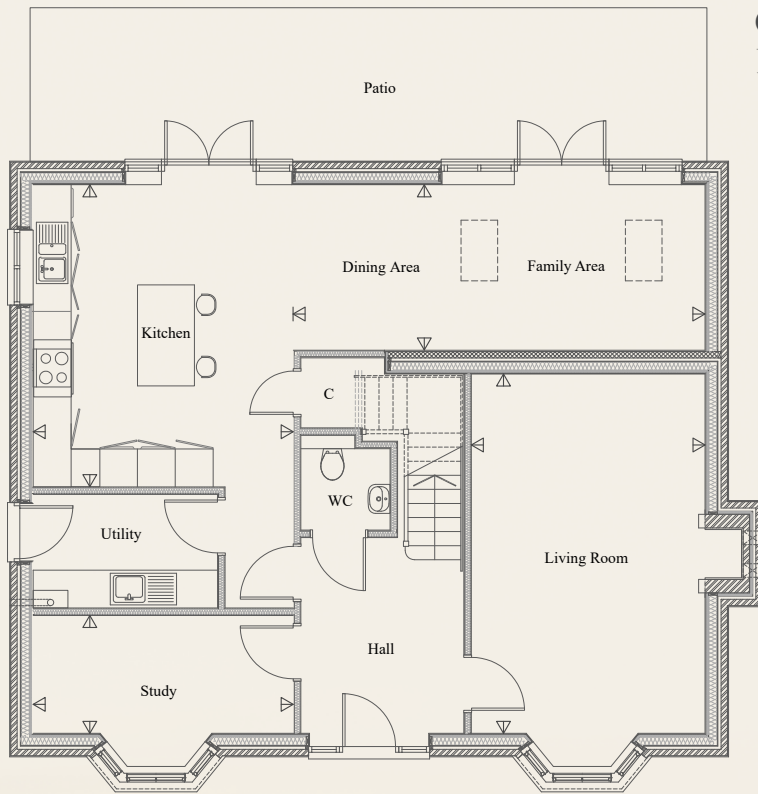
- *Private courtyard entrance with parking and two garages*

- *Feature log burner*



# N<sup>o</sup> 4

## GROUND FLOOR



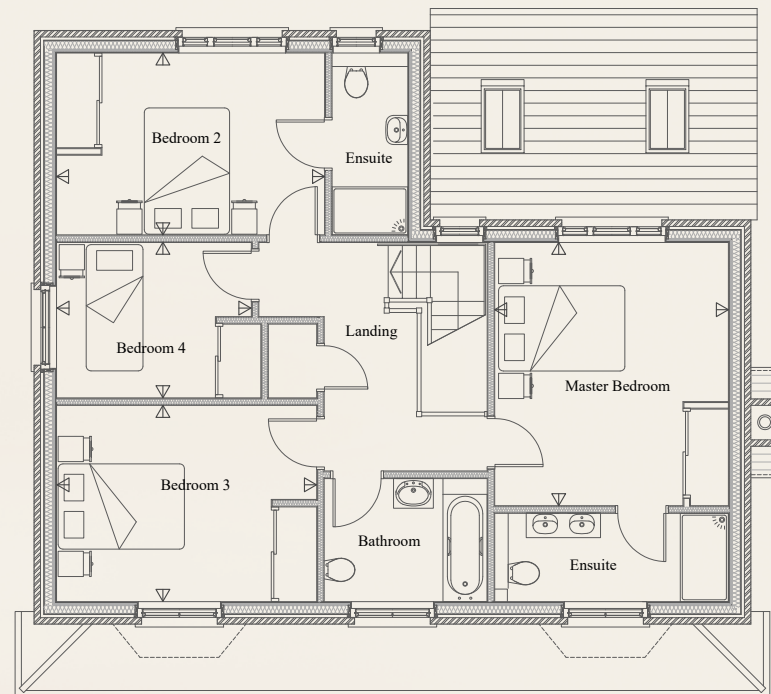
### GROUND FLOOR

<b>Kitchen</b>	15'7 x 13'5	4790mm x 4120mm
<b>Dining/Family Area</b>	21'4 x 8'6	6520mm x 2620mm
<b>Living Room</b>	18'7 x 12'1	5690mm x 3700mm
<b>Study</b>	13'5 x 6'1	4120mm x 1870mm

### FIRST FLOOR

<b>Master Bedroom</b>	13'7 x 12'1	4170mm x 3700mm
<b>Bedroom 2</b>	13'9 x 9'4	4240mm x 2880mm
<b>Bedroom 3</b>	13'5 x 10'2	4120mm x 3110mm
<b>Bedroom 4</b>	10'1 x 8'7	3090mm x 2460mm

## FIRST FLOOR



- *Four parking spaces*
- *Characterful sash windows*
- *Feature log burner*



N<sup>o</sup> 5

UPPER GROUND FLOOR

GROUND FLOOR

<b>Kitchen/Dining/Family Room</b>	24'6 x 12'2	7500mm x 3710mm
<b>Living Room</b>	12'3 x 11'2	3740mm x 3410mm

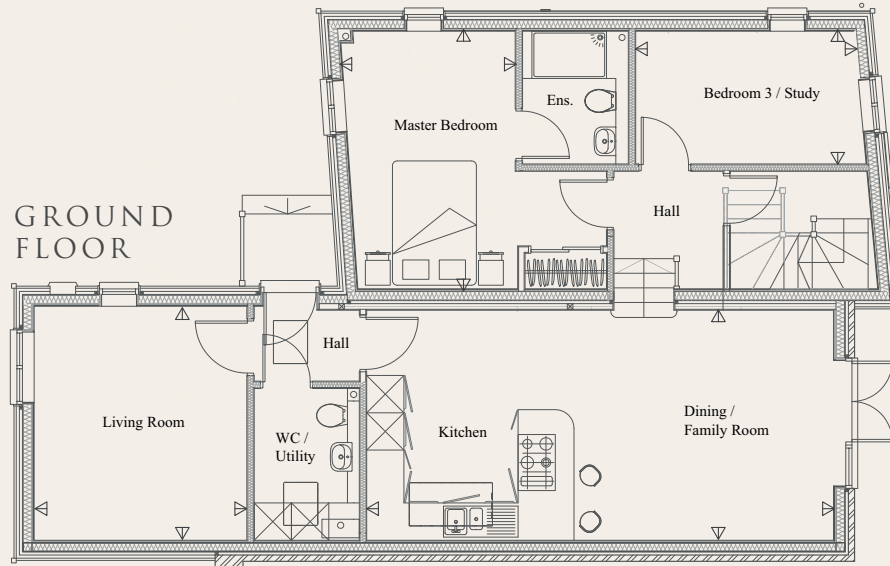
UPPER GROUND FLOOR

<b>Master Bedroom</b>	13'8 x 10'1	4210mm x 3070mm
<b>Bedroom 3/Study</b>	11'0 x 7'4	3360mm x 2250mm

FIRST FLOOR

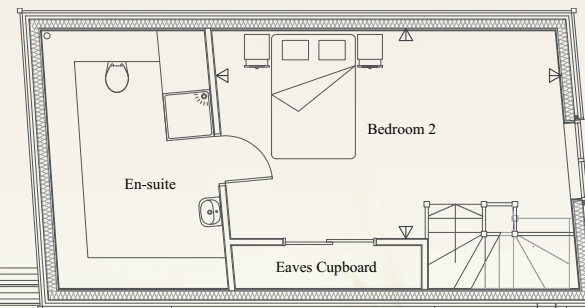
<b>Bedroom 2</b>	10'5 x 8'6	5581mm x 3375mm
------------------	------------	-----------------

GROUND FLOOR



- *Impressive vaulted kitchen/dining/family room*
- *Flexible living accommodation*
- *Two parking spaces*

FIRST FLOOR



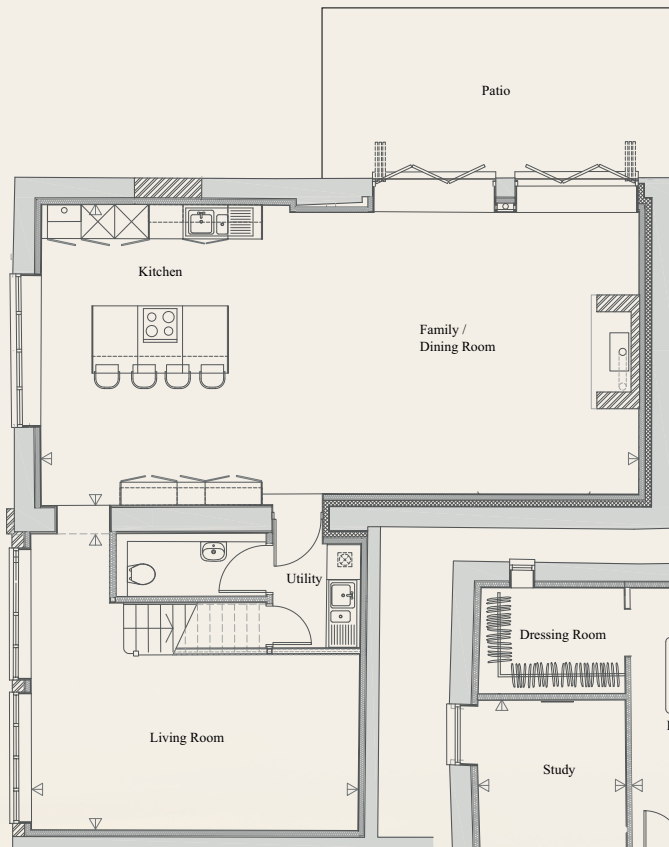
# N<sup>o</sup> 8

## LOWER GROUND FLOOR

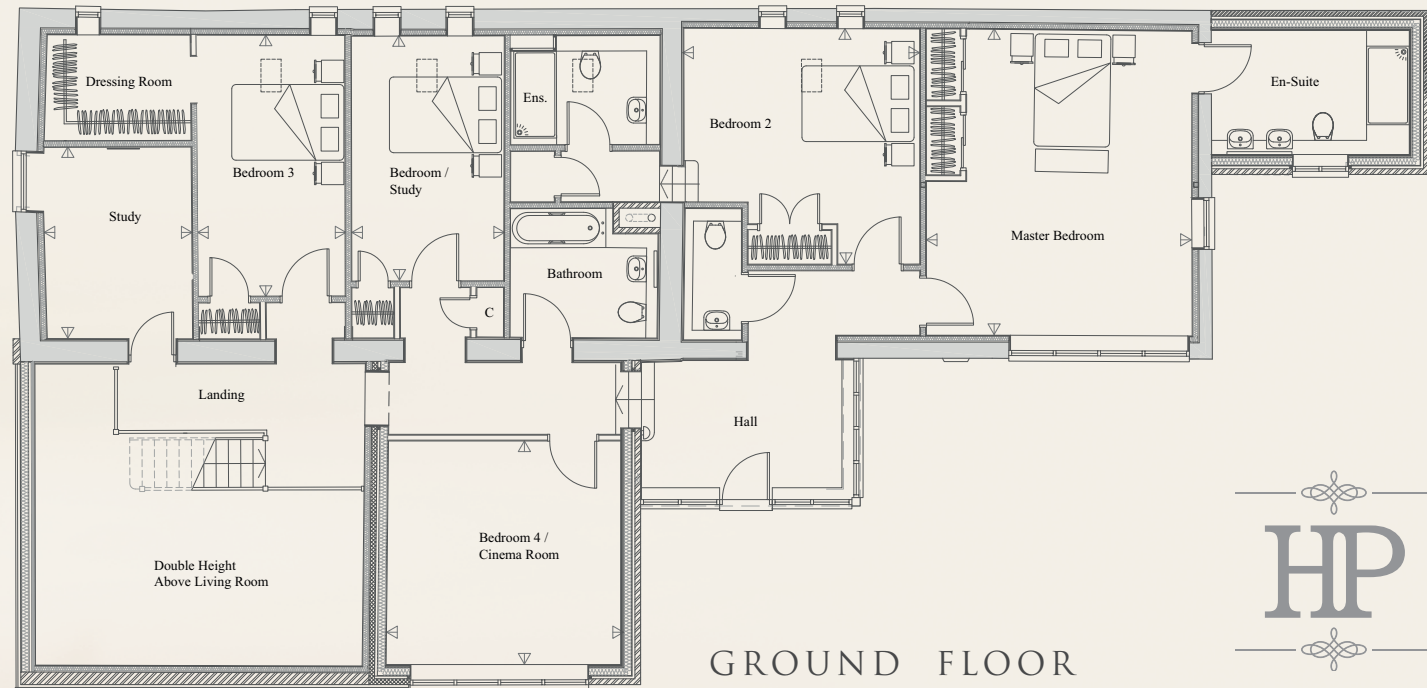
<b>Kitchen/Dining/Family Room</b>	35'0 x 17'0	10670mm x 5180mm
<b>Living Room</b>	19'2 x 18'9	5850mm x 5760mm

## GROUND FLOOR

<b>Study</b>	10'7 x 11'7	3270mm x 2580mm
<b>Master Bedroom</b>	17'5 x 15'4	5340mm x 4680mm
<b>Bedroom 2</b>	13'7 x 13'6	4190mm x 4150mm
<b>Bedroom 3</b>	14'5 x 8'6	4420mm x 2620mm
<b>Bedroom 4/Cinema Room</b>	13'6 x 13'1	4160mm x 3990mm
<b>Bedroom 5</b>	13'7 x 8'9	4170mm x 2720mm



## LOWER GROUND FLOOR



- *Vaulted, galleried living room*
- *Two garages*
- *Private courtyard entrance with parking*

## GROUND FLOOR

