

Vista Heights

Faversham House, 232 Addington Road, Selston, CR2 8LE

Sixteen luxury 1 & 2 bedroom apartments







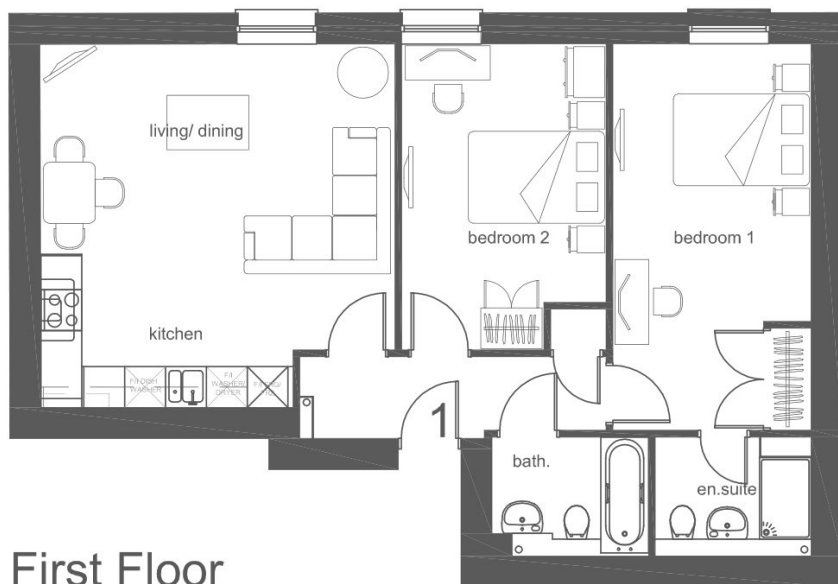
Vista Heights

Vista Heights is an exciting first & second floor conversion of an existing building into a collection of 16 stunning apartments in a fantastic location for local amenities.

Hand pick from a selection of 1 and 2 bedroom apartments which vary slightly in layout and style to find the perfect one for you! All apartments have private allocated parking space. A number of apartments to the rear of Vista Heights have views over open countryside and for those that like to be in the heart of the action and life the front of the building looks down to Addington Road.

Situated in a convenient spot, offering an array of amenities on the doorstep together with easy access to major road links and along a main bus route. The Croydon tram line is also less than 1 mile away.





First Floor

Plot 1
2 Bed Flat - First Floor

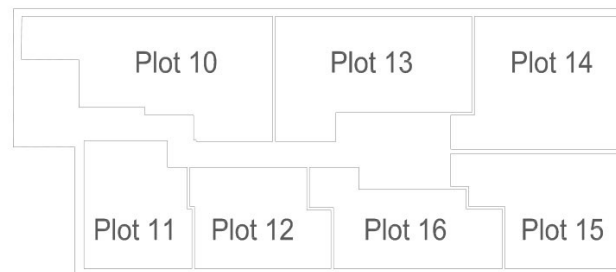
Finished Room Sizes (Metric)

Living/Dining/Kitchen	5.22m x 5.34m
Bedroom 1	2.91m x 5.68m
Bedroom 2	3.00m x 4.49m

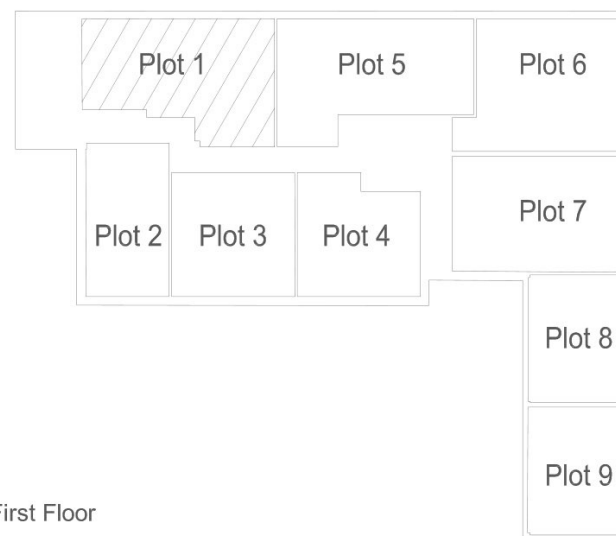
Finished Room Sizes (Imperial)

Living/Dining	17' 2" x 17' 6"
Bedroom 1	9' 7" x 18' 8"
Bedroom 2	9' 10" x 14' 9"

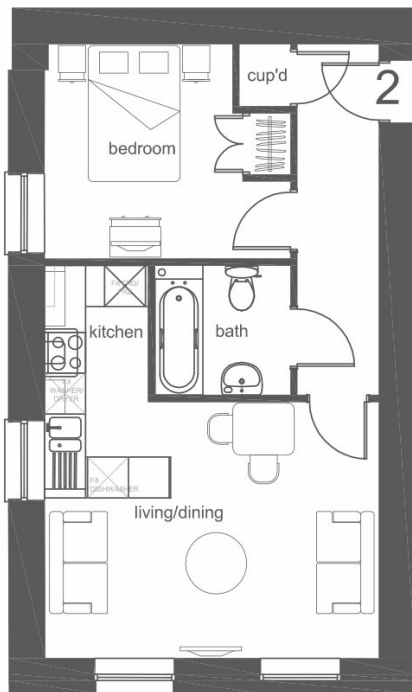
Total Gross Internal Floor Area = 71.9m²



Second Floor



First Floor



First Floor

Plot 2
1 Bed Flat - First Floor

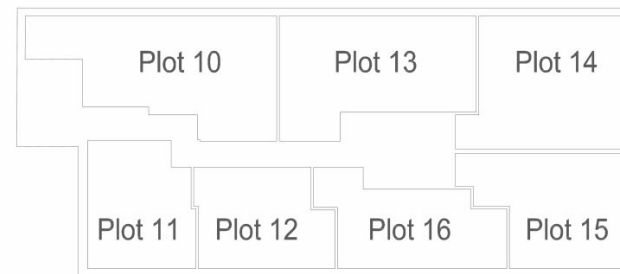
Finished Room Sizes (Metric)

Living/Dining/Kitchen	4.90m x 5.76m
Bedroom	3.61m x 3.15m

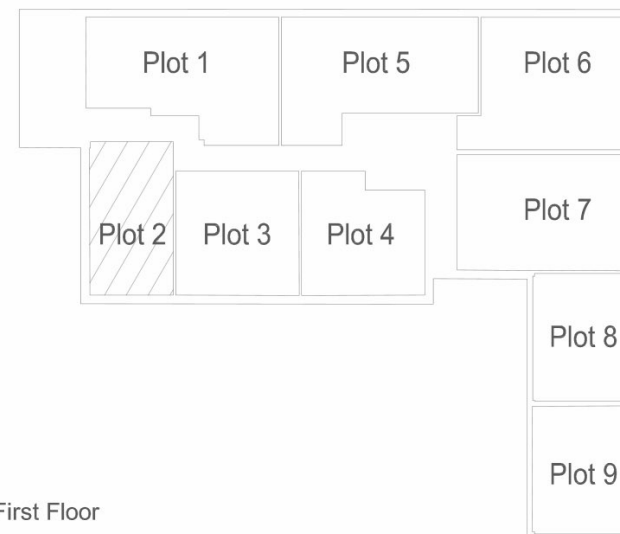
Finished Room Sizes (Imperial)

Living/Dining/Kitchen	16' 1" x 18' 11"
Bedroom 1	11' 10" x 10' 4"

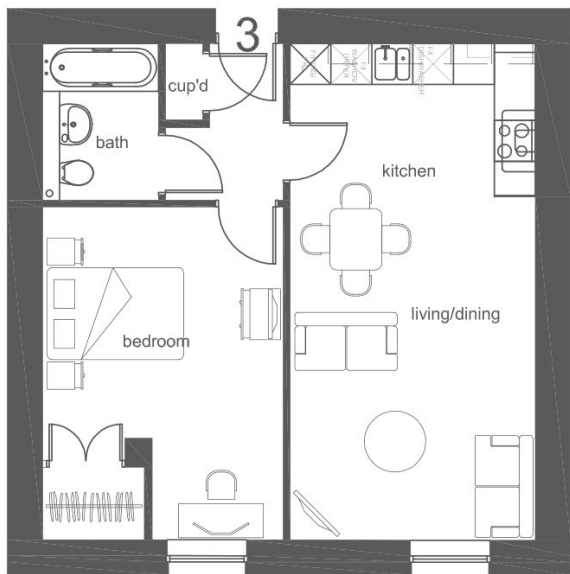
Total Gross Internal Floor Area = 44.6m²



Second Floor



First Floor



First Floor

Plot 3
1 Bed Flat - First Floor

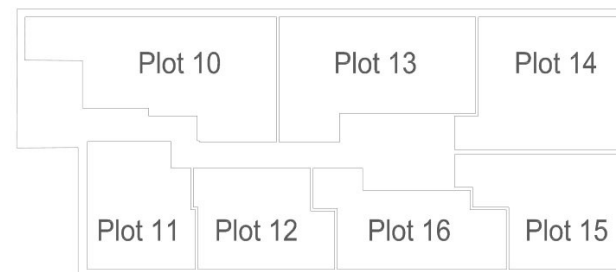
Finished Room Sizes (Metric)

Living/Dining/Kitchen	3.60m x 7.29m
Bedroom	3.53m x 4.89m

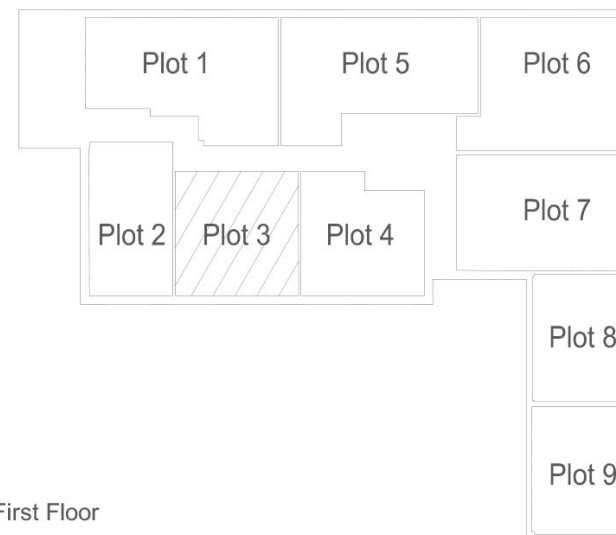
Finished Room Sizes (Imperial)

Living/Dining/Kitchen	11' 10" x 23' 11"
Bedroom 1	11' 7" x 16' 1"

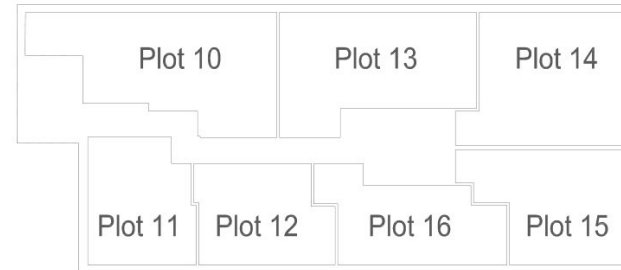
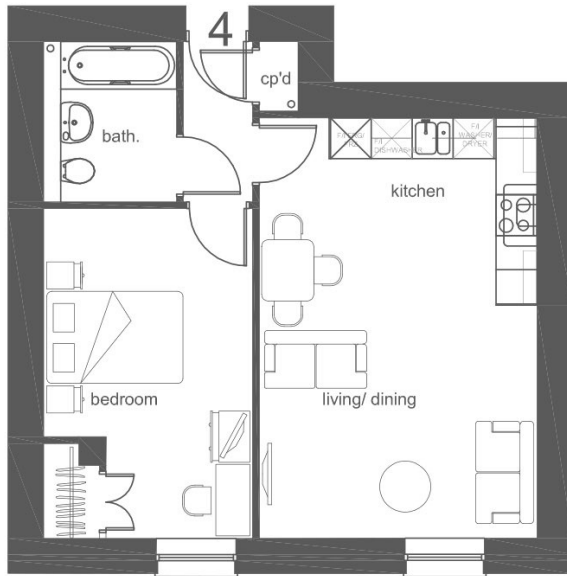
Total Gross Internal Floor Area = 52.9m²



Second Floor



First Floor



Second Floor

First Floor

Plot 4
1 Bed Flat - First Floor

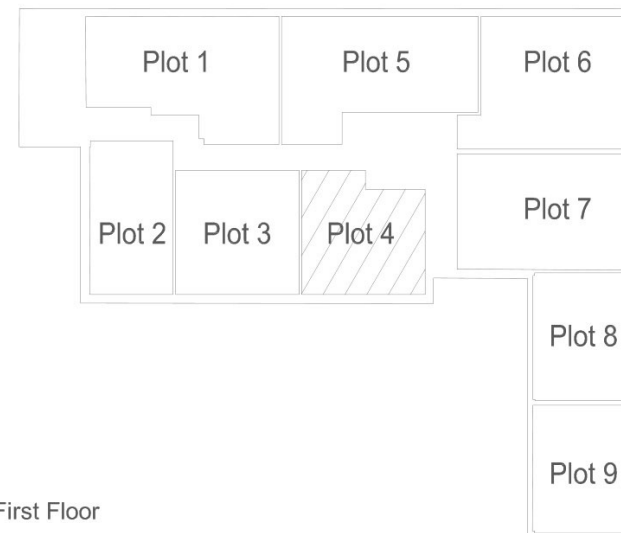
Finished Room Sizes (Metric)

Living/Dining/Kitchen	4.07m x 6.17m
Bedroom	3.07m x 4.84m

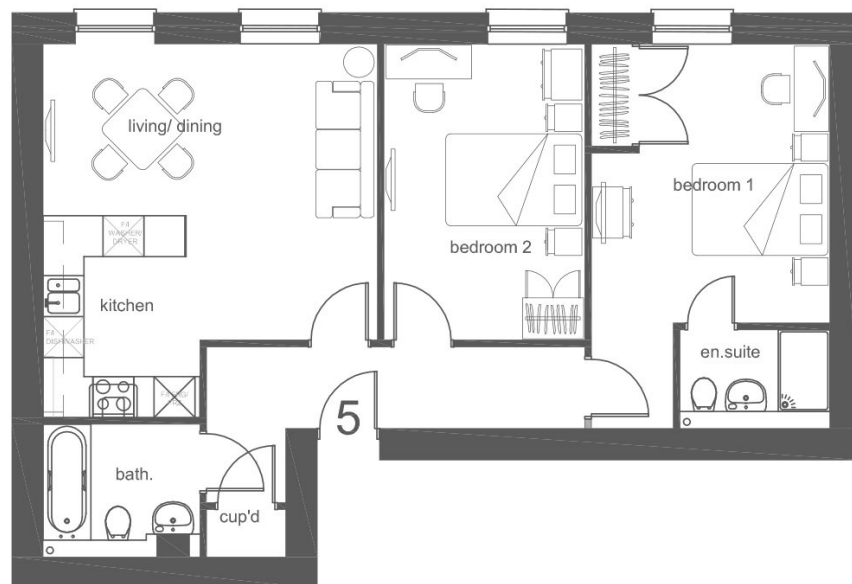
Finished Room Sizes (Imperial)

Living/Dining/Kitchen	13' 4" x 20' 3"
Bedroom 1	10' 1" x 15' 11"

Total Gross Internal Floor Area = 48.8m²



First Floor



First Floor

Plot 5
2 Bed Flat - First Floor

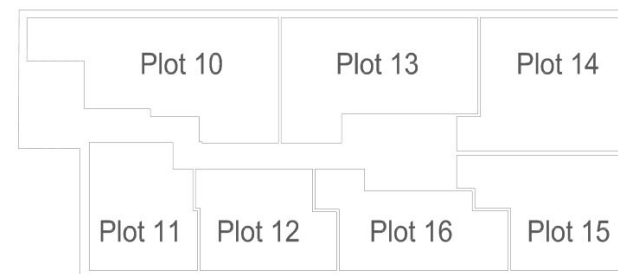
Finished Room Sizes (Metric)

Living/Dining/Kitchen	4.91m x 5.48m
Bedroom 1	3.50m x 5.64m
Bedroom 2	2.94m x 4.35m

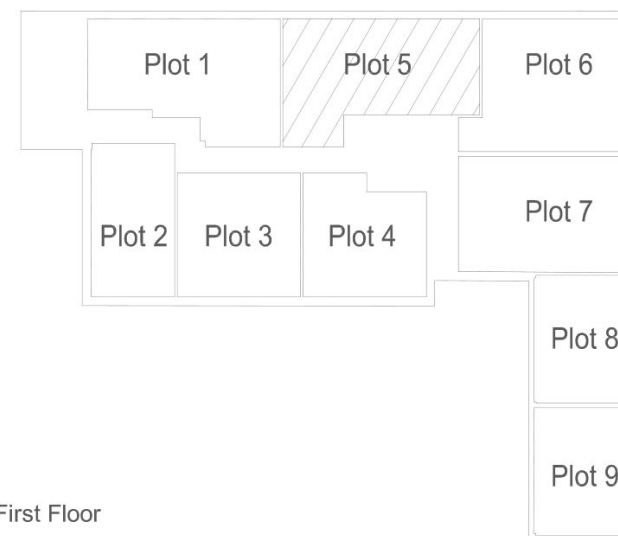
Finished Room Sizes (Imperial)

Living/Dining/Kitchen	16' 1" x 18'
Bedroom 1	11' 6" x 18' 6"
Bedroom 2	9' 8" x 14' 3"

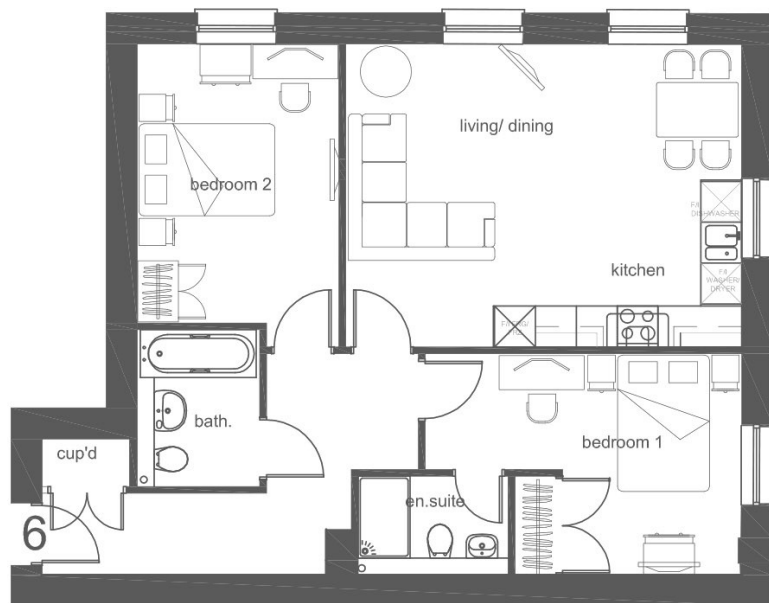
Total Gross Internal Floor Area = 71.9m²



Second Floor



First Floor



First Floor

Plot 6
2 Bed Flat - First Floor

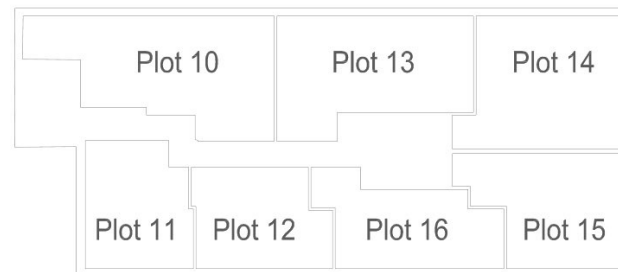
Finished Room Sizes (Metric)

Living/Dining/Kitchen	5.81m x 4.45m
Bedroom 1	4.65m x 3.25m
Bedroom 2	2.97m x 4.45m

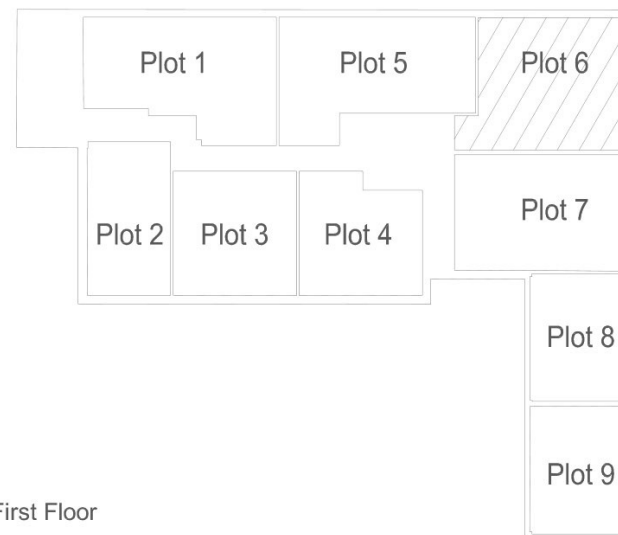
Finished Room Sizes (Imperial)

Living/Dining/Kitchen	19' 1" x 14' 7"
Bedroom 1	15' 3" x 10' 8"
Bedroom 2	9' 9" x 14' 7"

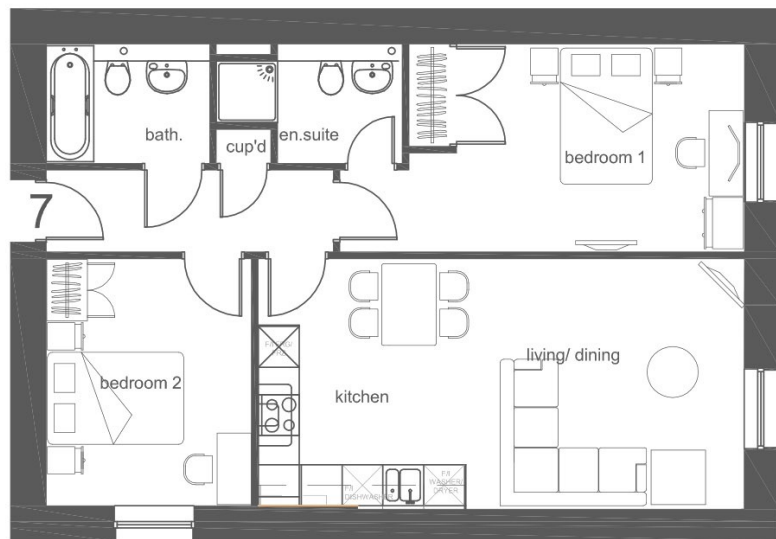
Total Gross Internal Floor Area = 71.9m²



Second Floor



First Floor



First Floor

Plot 7
2 Bed Flat - First Floor

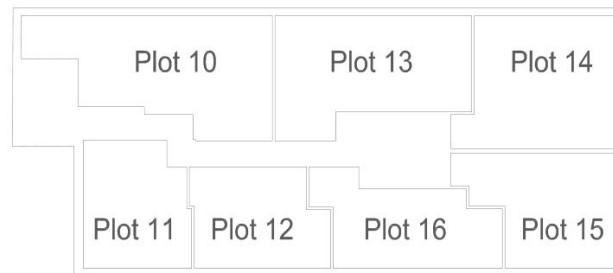
Finished Room Sizes (Metric)

Living/Dining/Kitchen	7.14m x 3.67m
Bedroom 1	5.94m x 3.05m
Bedroom 2	3.02m x 3.62m

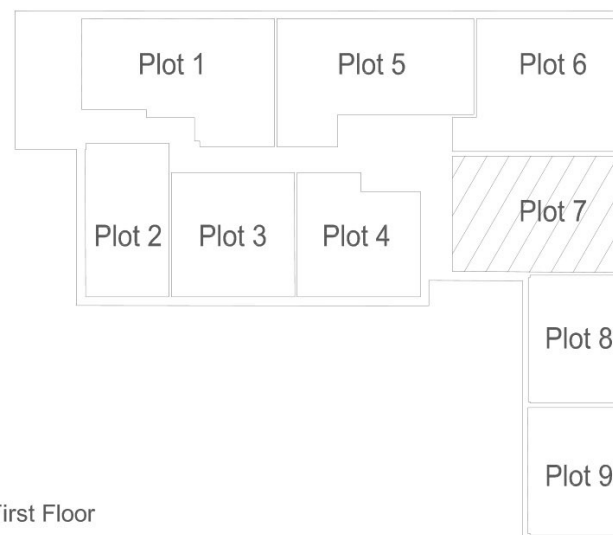
Finished Room Sizes (Imperial)

Living/Dining/Kitchen	23' 5" x 12' 1"
Bedroom 1	19' 6" x 10'
Bedroom 2	9' 11" x 11' 11"

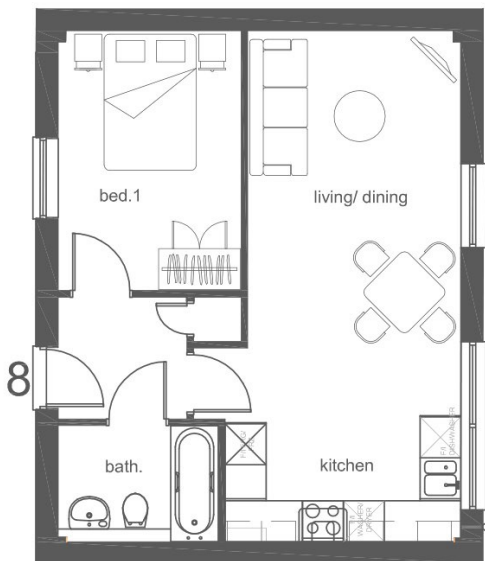
Total Gross Internal Floor Area = 69.7m²



Second Floor



First Floor



First Floor

Plot 8
1 Bed Flat - First Floor

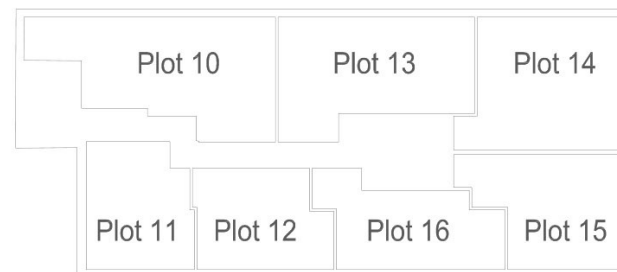
Finished Room Sizes (Metric)

Living/Dining/Kitchen	3.13m x 7.50m
Bedroom	2.68m x 3.82m

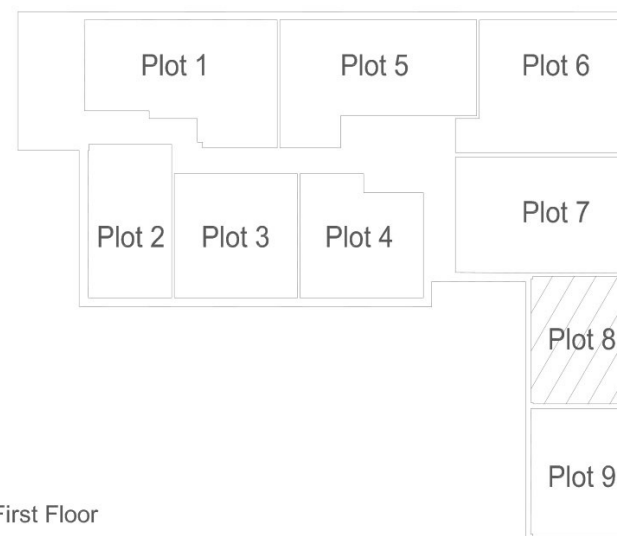
Finished Room Sizes (Imperial)

Living/Dining/Kitchen	10' 3" x 24' 8"
Bedroom 1	8' 10" x 12' 6"

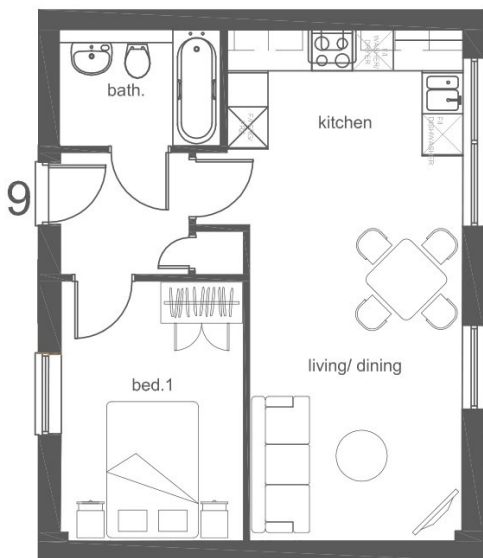
Total Gross Internal Floor Area = 44.3m²



Second Floor



First Floor



First Floor

Plot 9
1 Bed Flat - First Floor

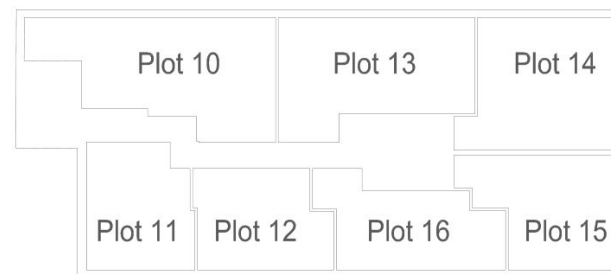
Finished Room Sizes (Metric)

Living/Dining/Kitchen	3.46m x 7.50m
Bedroom	2.67m x 3.82m

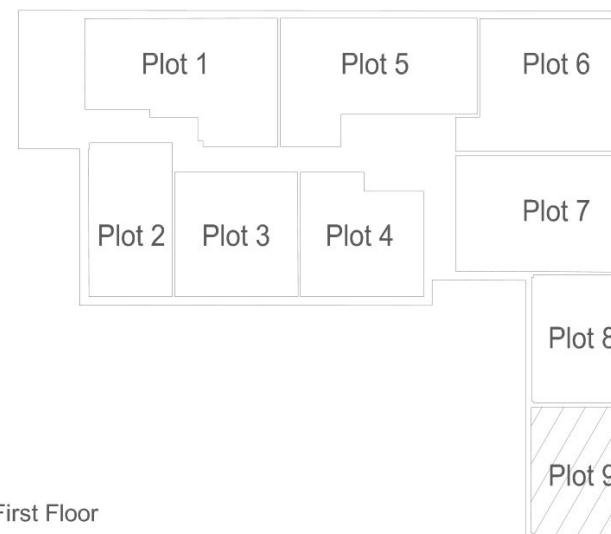
Finished Room Sizes (Imperial)

Living/Dining/Kitchen	11' 5" x 24' 8"
Bedroom 1	8' 9" x 12' 6"

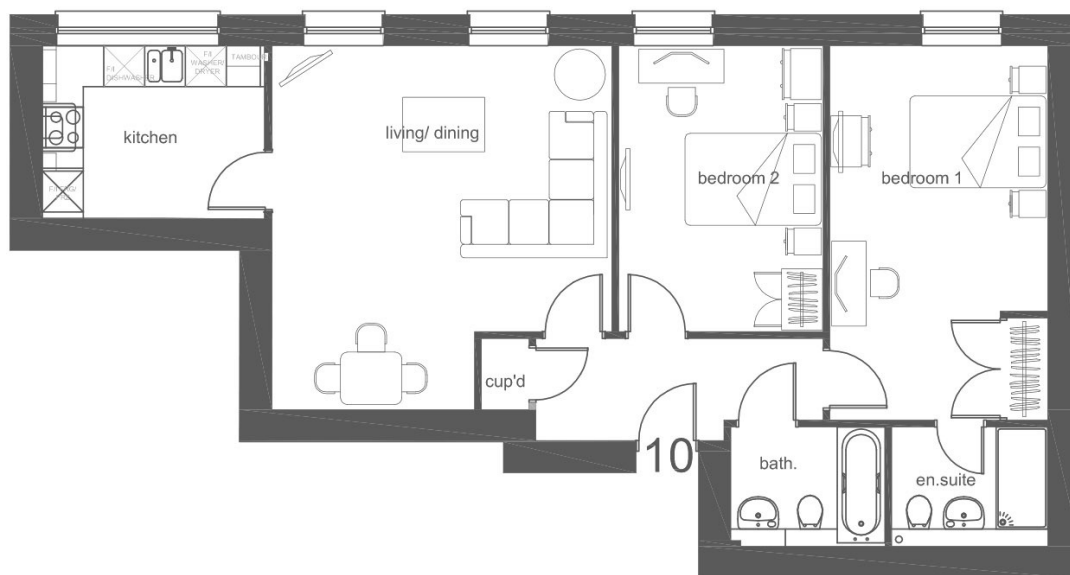
Total Gross Internal Floor Area = 44.4m²



Second Floor



First Floor



Second Floor

Plot 10
2 Bed Flat - Second Floor

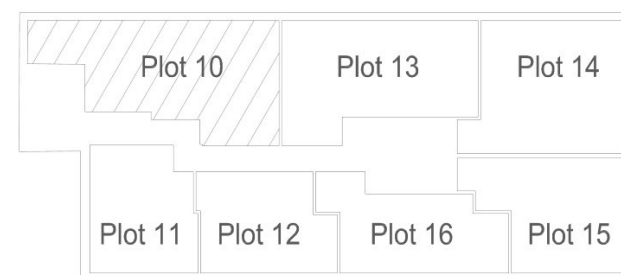
Finished Room Sizes (Metric)

Living/Dining	4.99m x 5.34m
Kitchen	3.26m x 2.53m
Bedroom 1	3.20m x 5.50m
Bedroom 2	3.00m x 4.49m

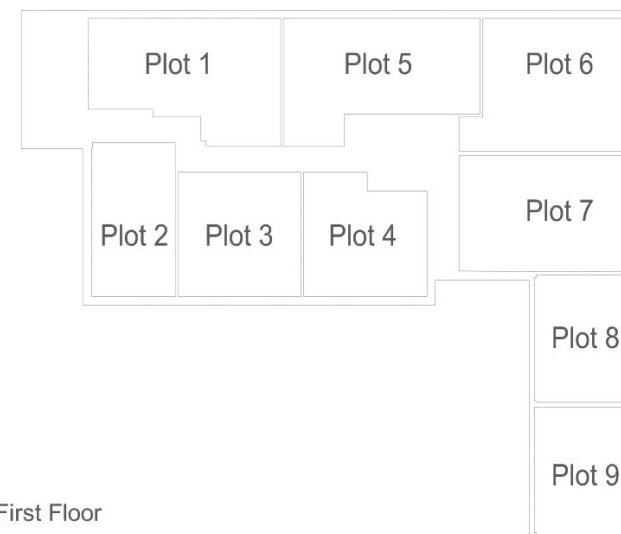
Finished Room Sizes (Imperial)

Living/Dining	16' 5" x 17' 7"
Kitchen	10' 8" x 8' 4"
Bedroom 1	10' 6" x 18' 1"
Bedroom 2	9' 10" x 14' 9"

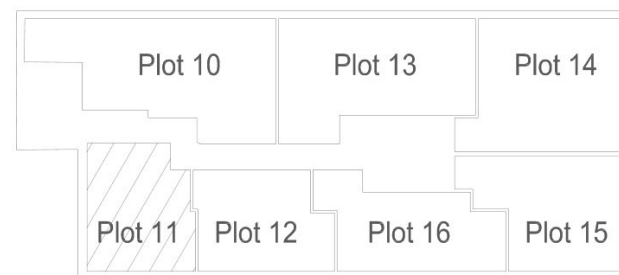
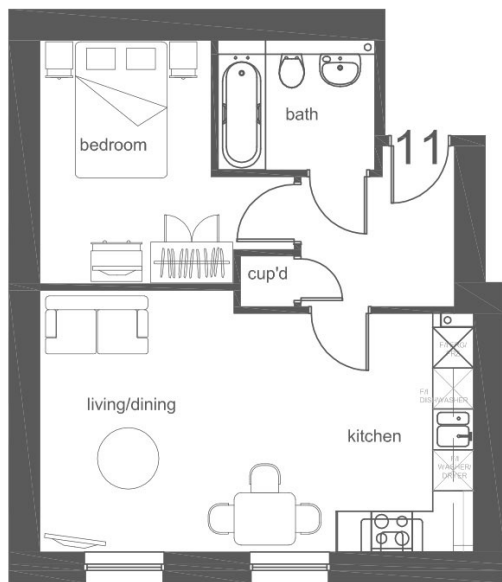
Total Gross Internal Floor Area = 80 m²



Second Floor



First Floor



Second Floor

Second Floor

Plot 11
1 Bed Flat - Second Floor

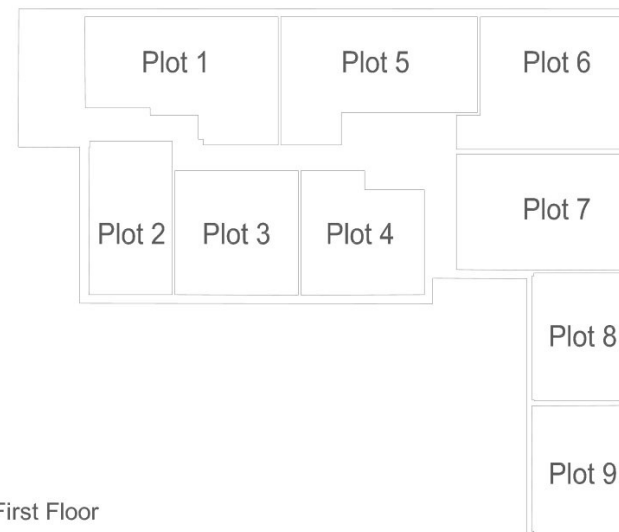
Finished Room Sizes (Metric)

Living/Dining/Kitchen	6.36m x 3.84m
Bedroom	2.51m x 3.57m

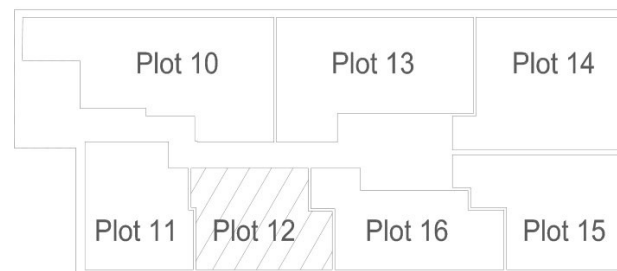
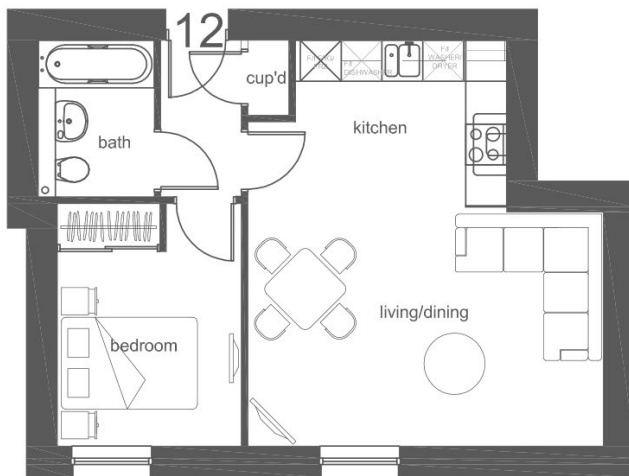
Finished Room Sizes (Imperial)

Living/Dining/Kitchen	20' 11" x 12' 7"
Bedroom 1	8' 3" x 11' 9"

Total Gross Internal Floor Area = 44.8m²



First Floor



Second Floor

Second Floor

Plot 12
1 Bed Flat - Second Floor

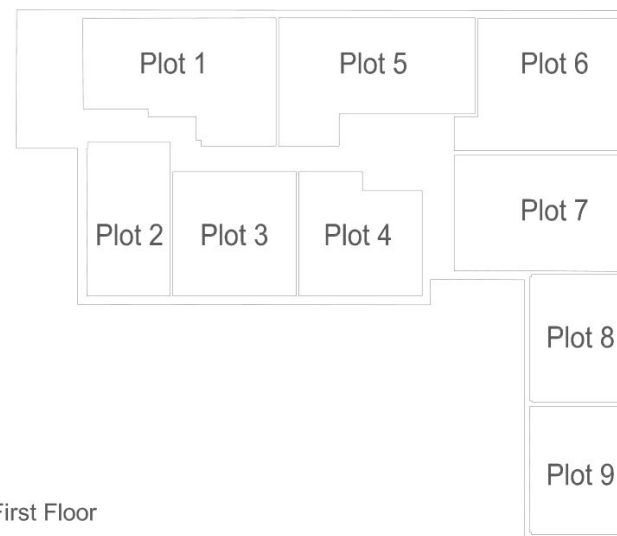
Finished Room Sizes (Metric)

Living/Dining/Kitchen	5.21m x 5.96m
Bedroom	2.70m x 3.56m

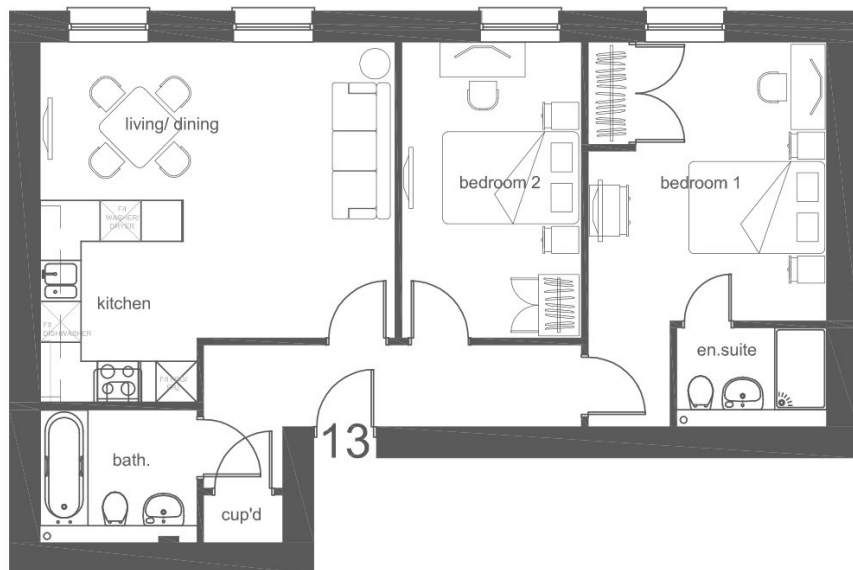
Finished Room Sizes (Imperial)

Living/Dining/Kitchen	17' 1" x 19' 7"
Bedroom 1	8" 10" x 11' 8"

Total Gross Internal Floor Area = 44.8m²



First Floor



Second Floor

Plot 13
2 Bed Flat - Second Floor

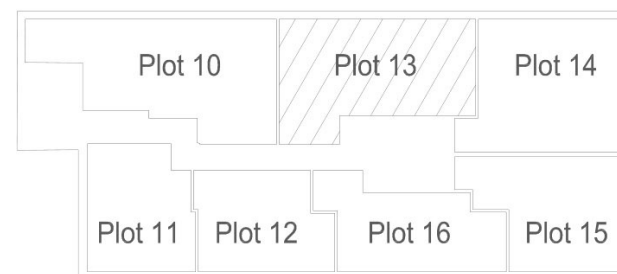
Finished Room Sizes (Metric)

Living/Dining/Kitchen	5.21m x 5.28m
Bedroom 1	3.50m x 5.64m
Bedroom 2	2.64m x 4.34m

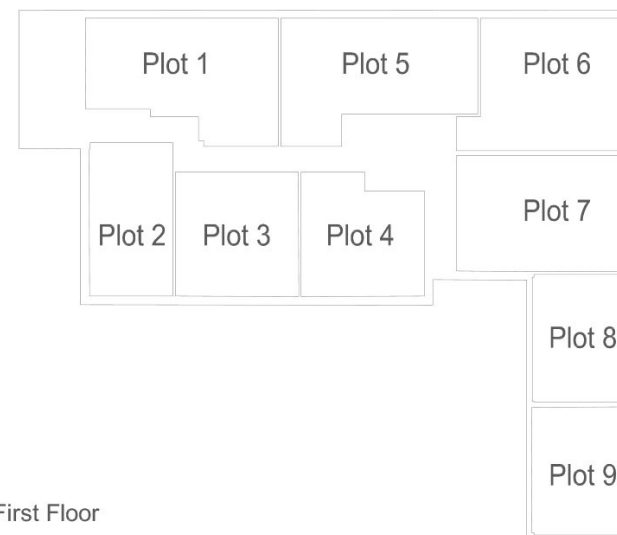
Finished Room Sizes (Imperial)

Living/Dining/Kitchen	17' 1" x 17' 4"
Bedroom 1	11' 6" x 18' 6"
Bedroom 2	8' 8" x 14' 3"

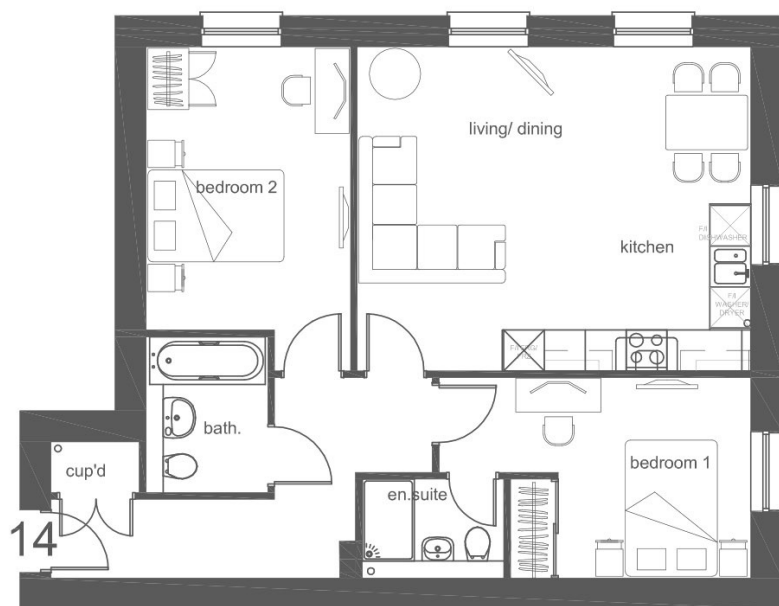
Total Gross Internal Floor Area = 71.3m²



Second Floor



First Floor



Second Floor

Plot 14
2 Bed Flat - Second Floor

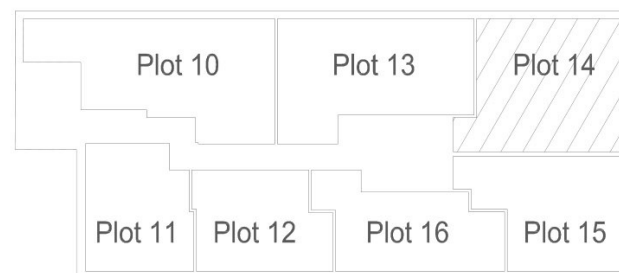
Finished Room Sizes (Metric)

Living/Dining/Kitchen	5.78m x 4.76m
Bedroom 1	4.58m x 2.94m
Bedroom 2	3.00m x 4.16m

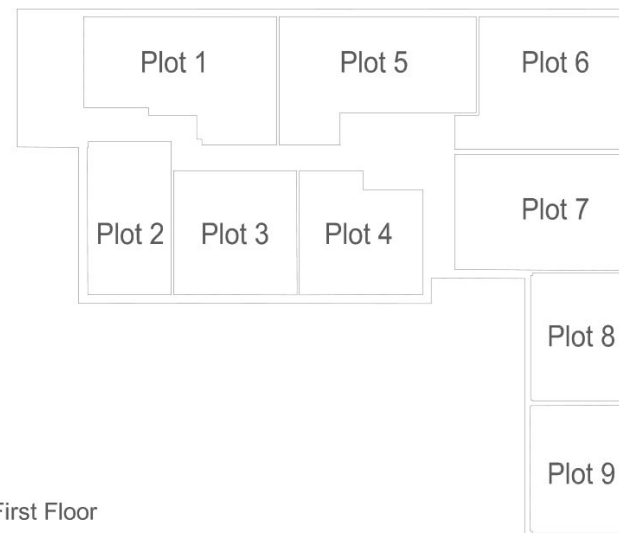
Finished Room Sizes (Imperial)

Living/Dining/Kitchen	19' x 15' 7"
Bedroom 1	15' x 9' 8"
Bedroom 2	9' 10" x 13' 8"

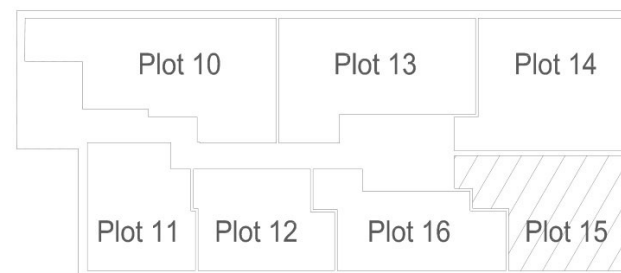
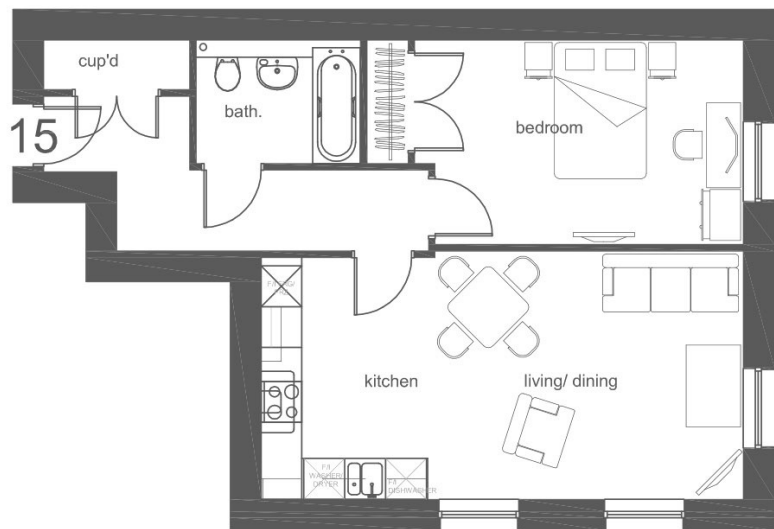
Total Gross Internal Floor Area = 72m²



Second Floor



First Floor



Second Floor

Second Floor

Plot 15
1 Bed Flat - Second Floor

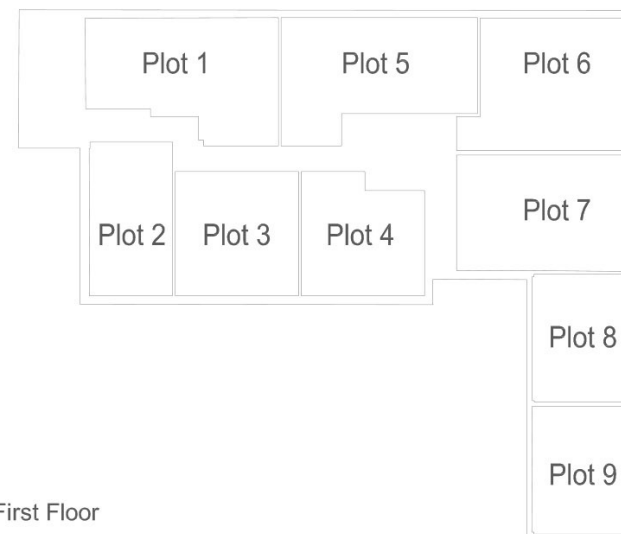
Finished Room Sizes (Metric)

Living/Dining/Kitchen	7.08m x 3.55m
Bedroom	5.52m x 3.00m

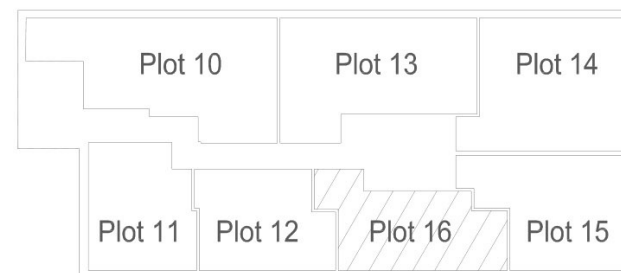
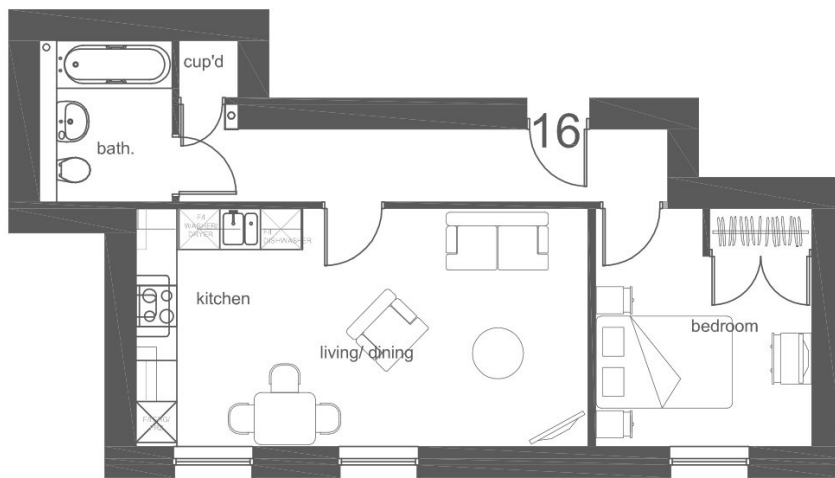
Finished Room Sizes (Imperial)

Living/Dining/Kitchen	23' 3" x 11' 8"
Bedroom 1	18' 2" x 9' 10"

Total Gross Internal Floor Area = 56.4m²



First Floor



Second Floor

Second Floor

Plot 16
1 Bed Flat - Second Floor

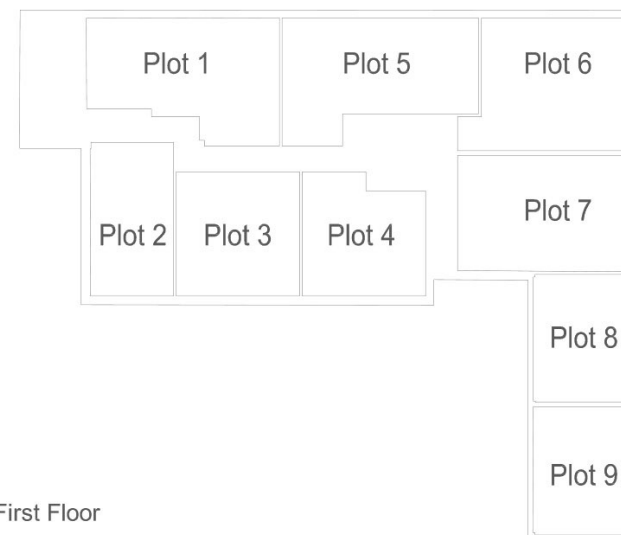
Finished Room Sizes (Metric)

Living/Dining/Kitchen	6.64m x 3.49m
Bedroom	3.18m x 3.49m

Finished Room Sizes (Imperial)

Living/Dining/Kitchen	21' 9" x 11' 6"
Bedroom 1	10' 5" x 11' 6"

Total Gross Internal Floor Area = 49.1m²



First Floor



Specification



Luxury kitchens

- individually designed kitchens
- quality oven, hob & extractor canopy
- integrated fridge/freezer
- integrated washer/dryer
- ceramic tiled floor
- laminate worktops (apartments)

Quality bathrooms

- luxury sanitary ware
- quality chrome taps
- contemporary wall tiling to part walls and floors

Heating & insulation

- Electric panel heating
- insulation to premier guarantee standards
- quality double glazing

Entertainment & communication

- communal satellite dish and digital aerial installed (usual subscriptions/licences required)
- telephone point to living room and bedrooms
- cat 6 cabling to main living rooms

Lighting

- low voltage downlights to kitchens and bathrooms
- pelmet and canopy lighting to kitchen

Finishing touches

- walls and ceilings painted white throughout
- all internal woodwork painted white

Warranty

- 10 year warranty by Premier Guarantee



About Astindale

Astindale was established in 2002 and has built a reputation for high quality houses and apartments set in carefully chosen locations. The company's aim is to provide individually designed housing for the modern lifestyle.

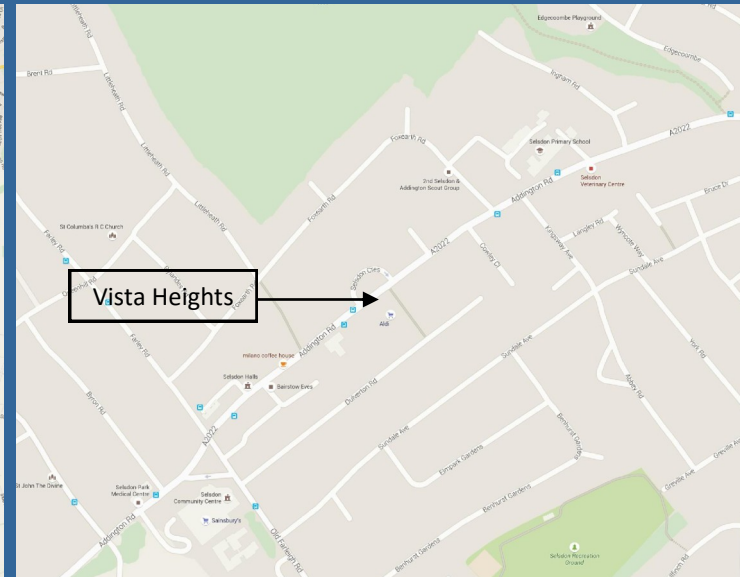
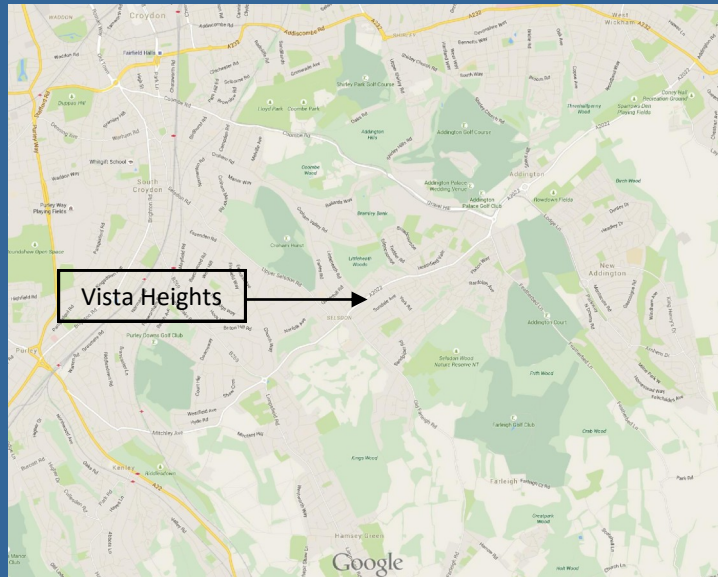
Over the past decade Astindale has built a range of properties, both traditional and modern in Kent, Surrey and South London. The company has won awards for both its modern and contemporary schemes.

All our new homes come with an NHBC or Premier guarantee and purchasers can be secure in the knowledge that all our properties are built to the high construction standards required by these organisations and carry their 10 year guarantee.





www.astindale.co.uk



For sales enquiries, please contact



01622 691911
www.rpcnewhomes.co.uk



020 8657 0051
www.propertywide.co.uk