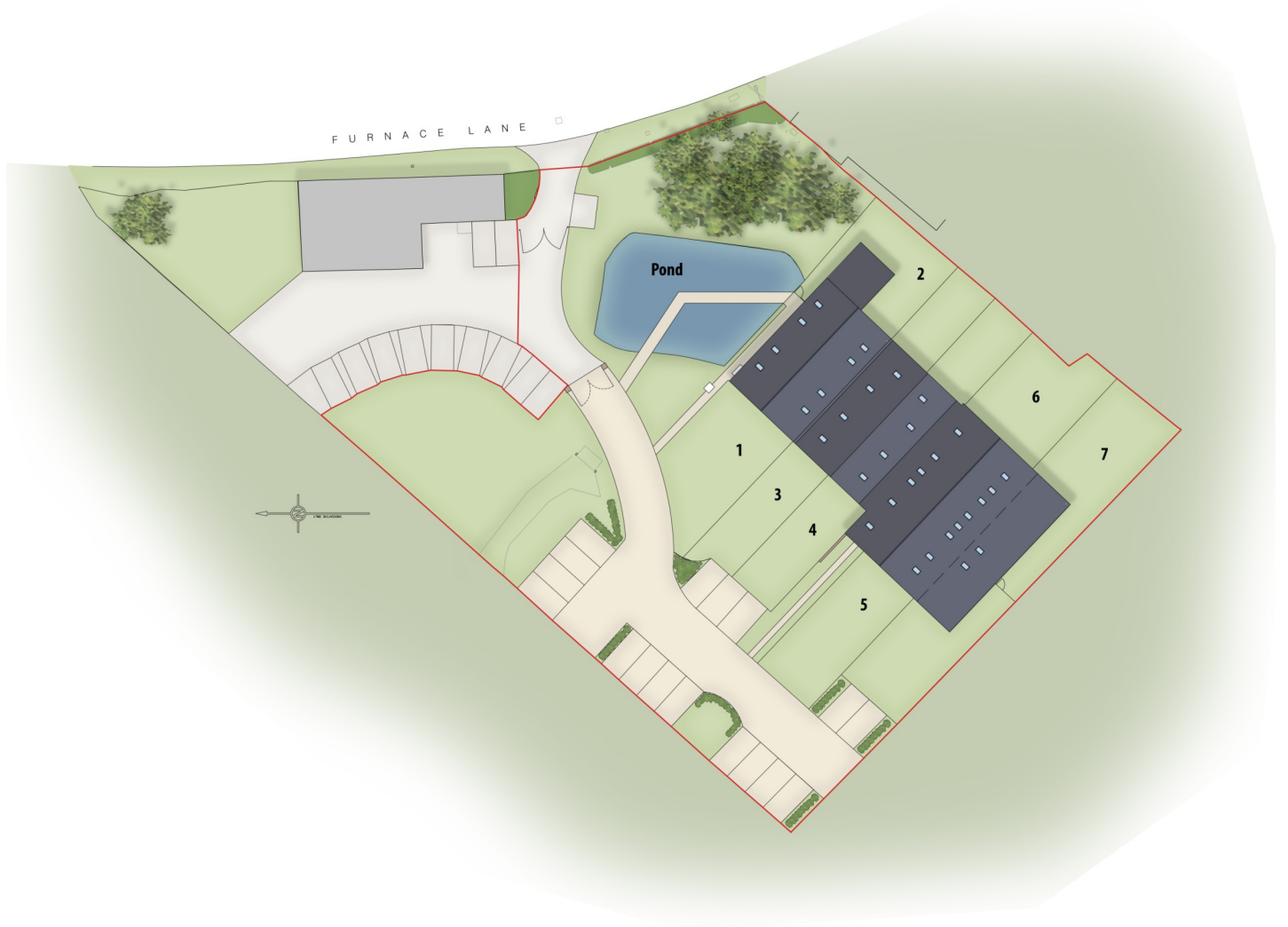




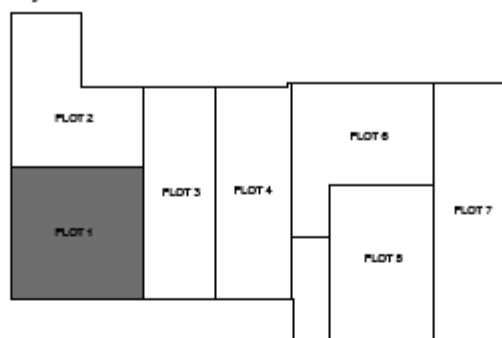
Orchard Heights Site Plan



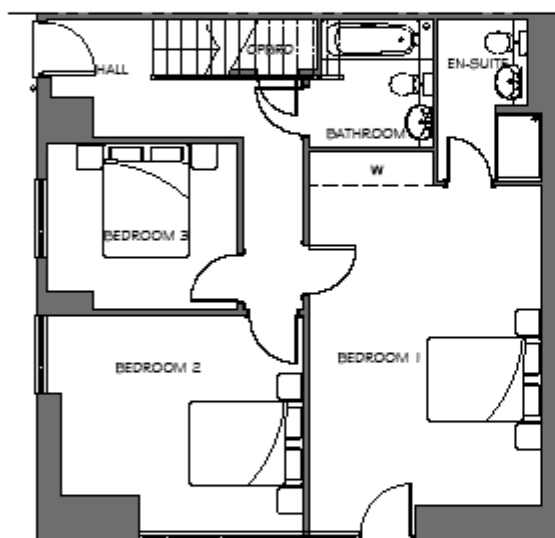
Note: All dimensions shown are finished dimensions (plasterboard to plasterboard) and are the maximum dimensions unless otherwise stated. Dimensions to bedrooms do not include



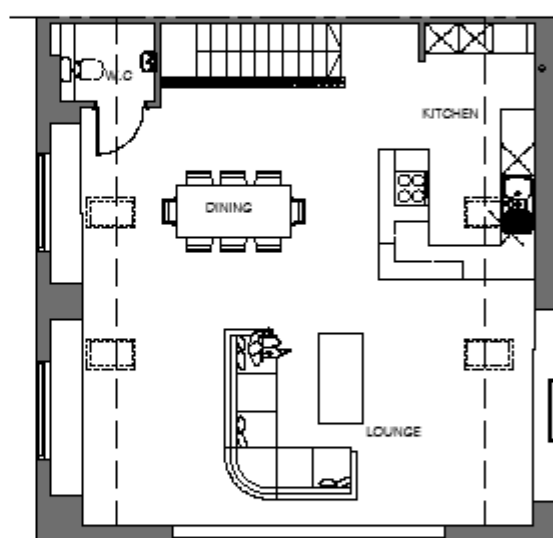
key Plan



PLOT 1



GROUND FLOOR PLAN



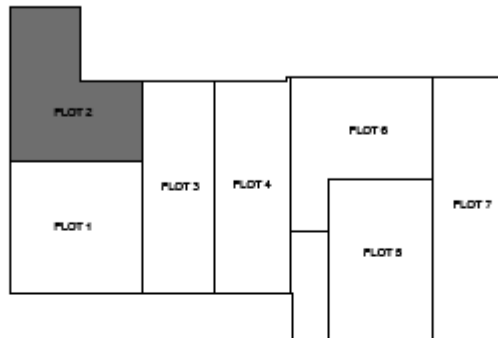
FIRST FLOOR PLAN

SCHEDULE OF ROOM SIZES - PLOT 1

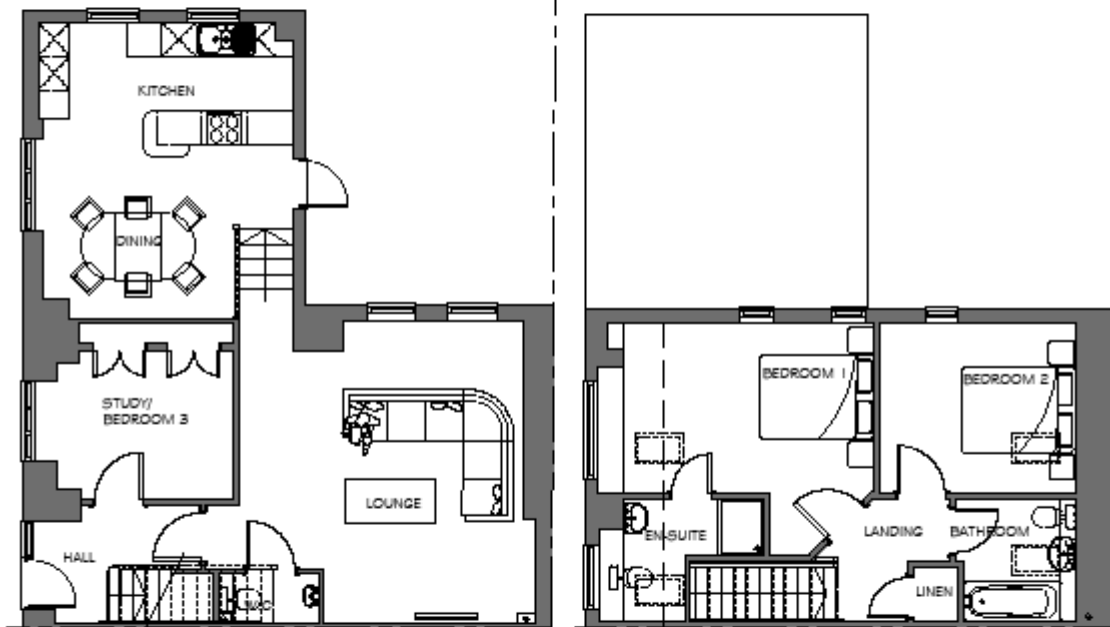
GROUND FLOOR	Finished room sizes (Metric)	Finished room sizes (Imperial)
Bedroom 1	5.63m x 4.09m	(18' 6" x 13' 5")
Bedroom 2	4.27m x 3.17m	(14' x 10' 5")
Bedroom 3	3.35m x 2.93m	(11' x 9' 7")
FIRST FLOOR		
Lounge/dining/kitchen	8.92m (Max) x 8.88m (Max)	(29' 3" Max x 29' 2" Max)
Total gross internal floor area	150.6 M.sq/1621 Sq.ft	



key Plan



PLOT 2



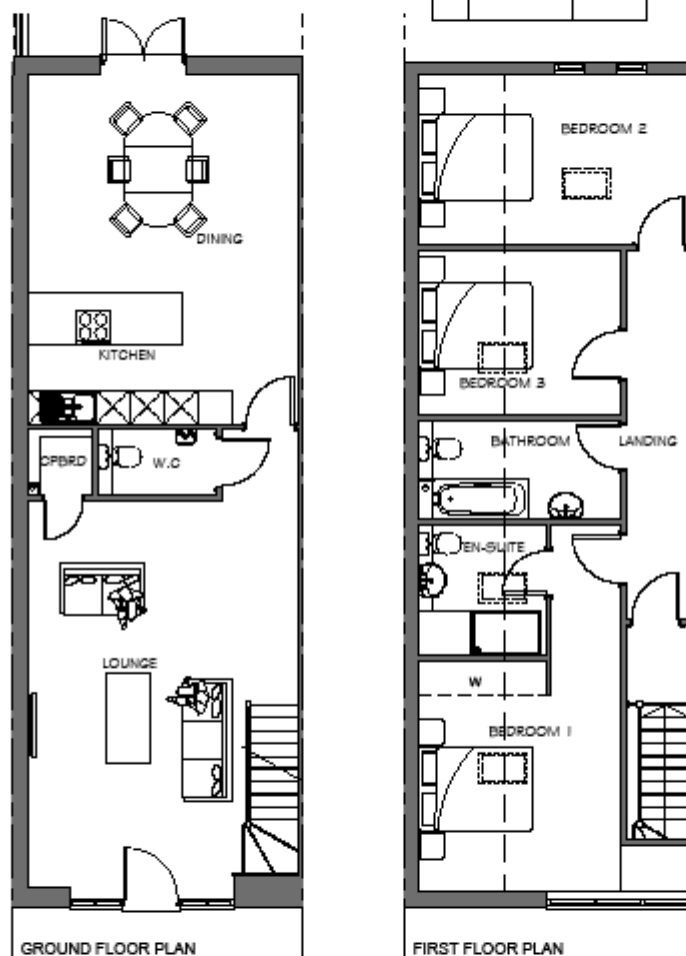
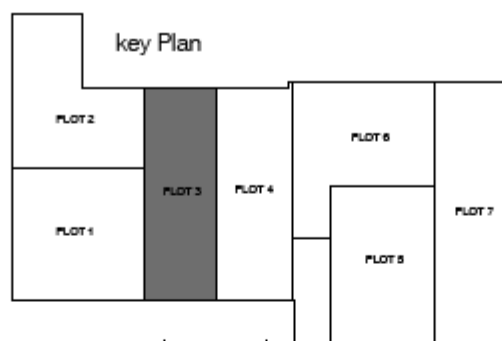
GROUND FLOOR PLAN

FIRST FLOOR PLAN

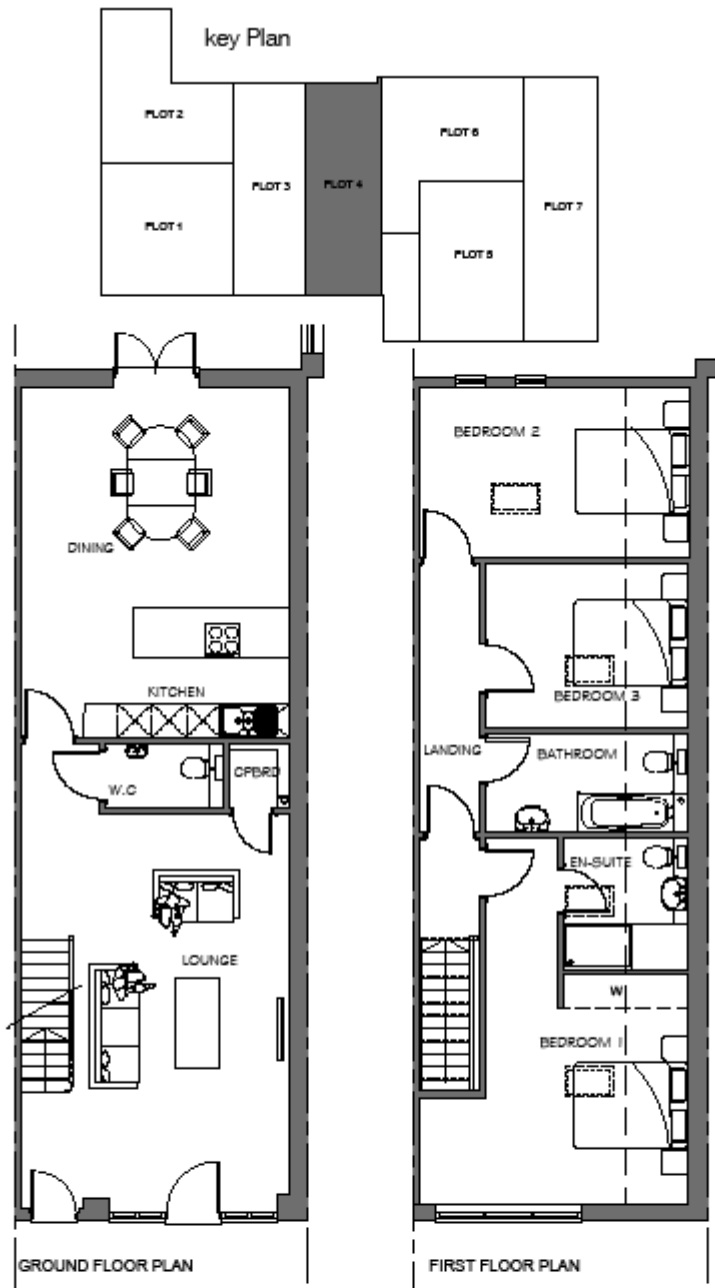
SCHEDULE OF ROOM SIZES - PLOT 2

GROUND FLOOR	Finished room sizes (Metric)	Finished room sizes (Imperial)
Kitchen/Dining	5.22m x 4.41m	(17' 2" x 14' 6")
Lounge	5.33m x 5.0m	(17' 6" x 16' 5")
Study/Bedroom 3	3.1m x 2.63m	(10' 3" x 8' 8")
FIRST FLOOR		
Bedroom 1	4.86m x 2.99m	(15' 11" x 9' 10")
Bedroom 2	3.45m x 2.99m	(11' 4" x 9' 10")
Total gross internal floor area	111.3 M.sq/1198 Sq.ft	

Note: All dimensions shown are finished dimensions (plasterboard to plasterboard) and are the maximum dimensions unless otherwise stated. Dimensions to bedrooms do not include

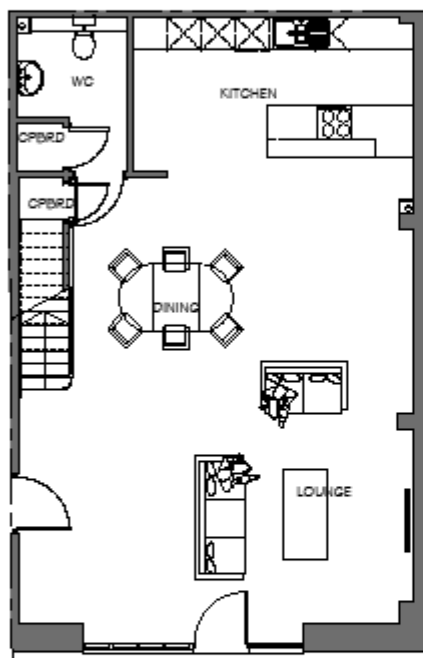
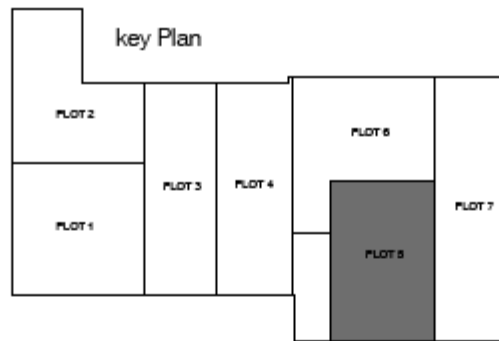


SCHEDULE OF ROOM SIZES - PLOT 3		
GROUND FLOOR	Finished room sizes (Metric)	Finished room sizes (Imperial)
Kitchen/Dining	6.16m x 4.78m	(20' 3" x 15' 8")
Lounge	6.81m x 4.78m	(22' 4" x 15' 8")
FIRST FLOOR		
Bedroom 1	4.05m (into Wardrobe) x 3.55m	(13' 4" (into Wardrobe) x 11' 4")
Bedroom 2	4.79m x 2.99m	(15' 9" x 9' 10")
Bedroom 3	3.55m x 2.89m	(11' 8" x 9' 6")
Total gross internal floor area	137.2 M.sq/1476 Sq.ft	

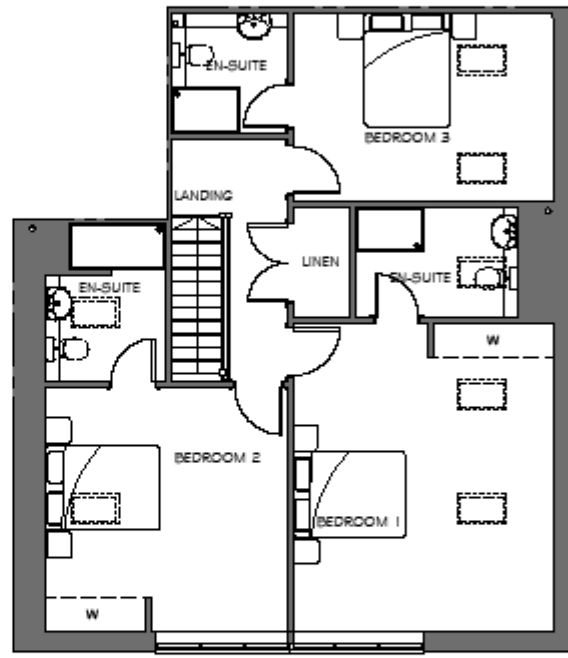


SCHEDULE OF ROOM SIZES - PLOT 4		
GROUND FLOOR	Finished room sizes (Metric)	Finished room sizes (Imperial)
Kitchen/Dining	6.16m x 4.72m	(20' 3" x 15' 6")
Lounge	7.03m x 4.72m	(23' 1" x 15' 6")
FIRST FLOOR		
Bedroom 1	4.06m (into Wardrobe) x 4.70m Max	(13' 4" (into Wardrobe) x 15' 5" Max)
Bedroom 2	4.74m x 2.99m	(15' 7" x 9' 10")
Bedroom 3	3.56m x 2.89m	(11' 8" x 9' 6")
Total gross internal floor area	136.2 M.sq/1466 Sq.ft	

Note: All dimensions shown are finished dimensions (plasterboard to plasterboard) and are the maximum dimensions unless otherwise stated. Dimensions to bedrooms do not include

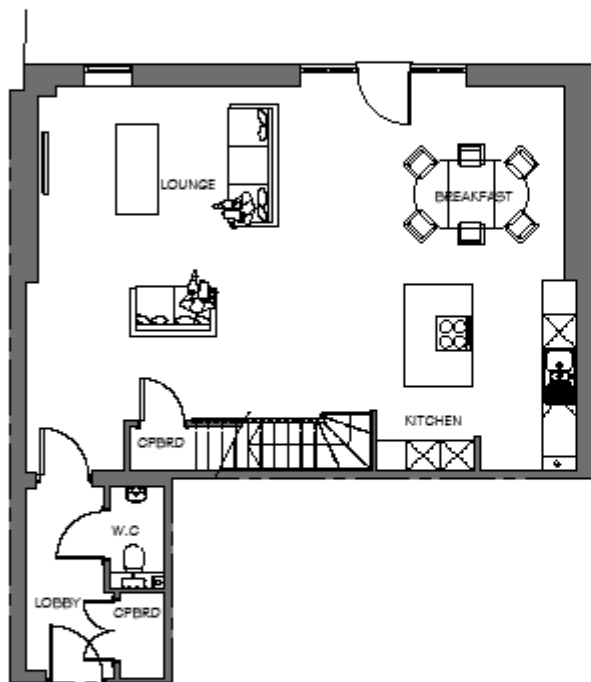
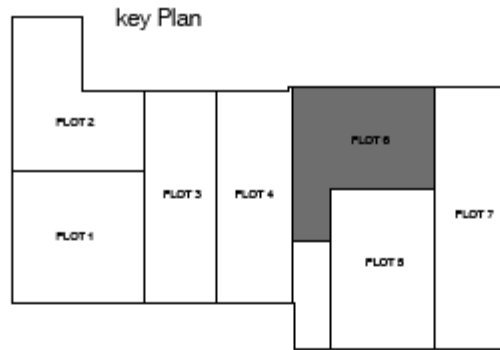


GROUND FLOOR PLAN

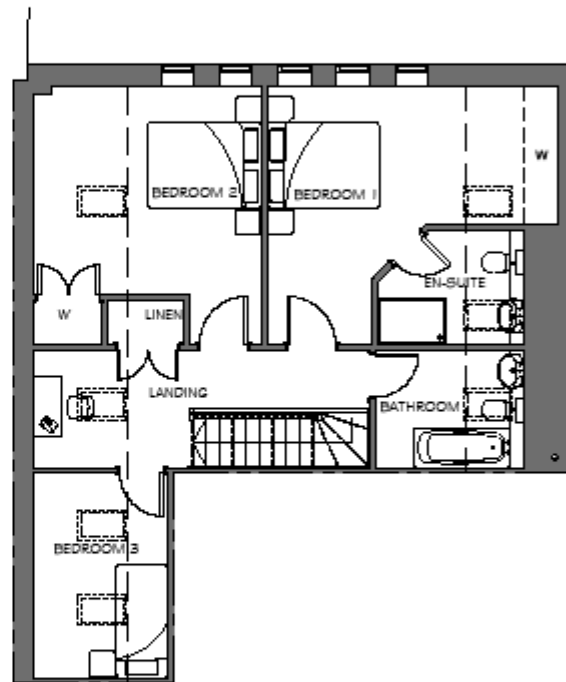


FIRST FLOOR PLAN

SCHEDULE OF ROOM SIZES - PLOT 5		
GROUND FLOOR	Finished room sizes (Metric)	Finished room sizes (Imperial)
Kitchen	4.91m x 2.74m	(16' 2" x 9')
Lounge/Dining	7.87m x 6.90m	(25' 10" x 22' 8")
FIRST FLOOR		
Bedroom 1	4.28m (into Wardrobe) x 4.25m	(14' 1" (into Wardrobe) x 14')
Bedroom 2	5.42m (into Wardrobe) x 4.59m	(17' 10" (into Wardrobe) x 15' 1")
Bedroom 3	4.59m x 3.81m	(15' 1" x 10' 10")
Total gross internal floor area	136.2 M.sq/1466 Sq.ft	



GROUND FLOOR PLAN



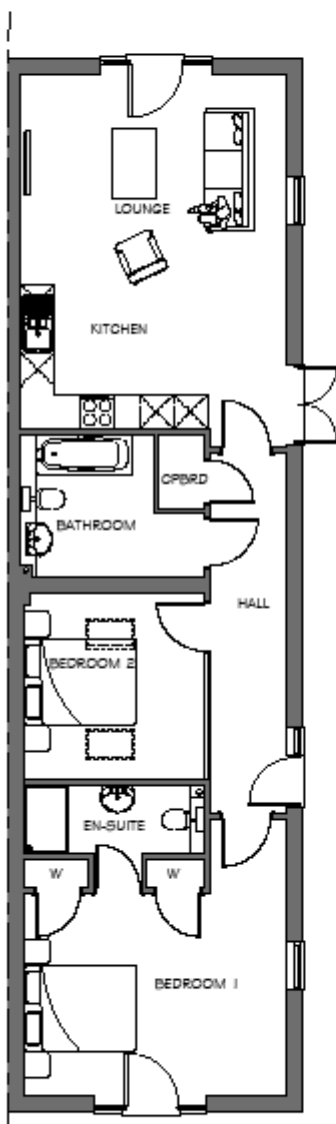
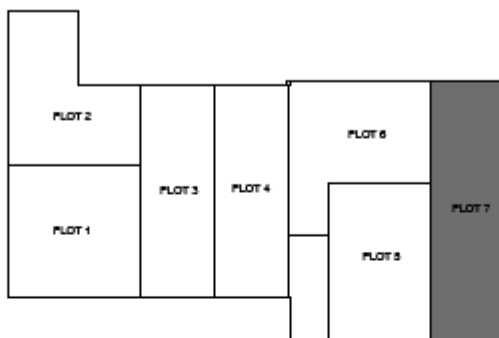
FIRST FLOOR PLAN

SCHEDULE OF ROOM SIZES - PLOT 6		
GROUND FLOOR	Finished room sizes (Metric)	Finished room sizes (Imperial)
Lounge/Dining/Kitchen	9.72m x 6.77m	(31' 11" x 22' 3")
FIRST FLOOR		
Bedroom 1	5.14m (into Wardrobe) x 4.54m Max	(16' 10" (into Wardrobe) x 14' 11" Max)
Bedroom 2	4.01m x 4.54m Max	(13' 2" x 14' 11" Max)
Bedroom 3	3.61m x 2.35m	(11' 10" x 7' 9")
Total gross internal floor area	141.4 M.sq/1522 Sq.ft	

Note: All dimensions shown are finished dimensions (plasterboard to plasterboard) and are the maximum dimensions unless otherwise stated. Dimensions to bedrooms do not include



key Plan



GROUND FLOOR PLAN

SCHEDULE OF ROOM SIZES - PLOT 7

GROUND FLOOR	Finished room sizes (Metric)	Finished room sizes (Imperial)
Lounge/Kitchen/Dining	6.23m x 4.68m	(20' 5" x 15' 4")
Bedroom 1	4.64m x 4.16m (into Wardrobe)	(15' 3" x 13' 8" into Wardrobe)
Bedroom 2	3.8m x 3.19m	(10' 10" x 10' 6")
Total gross internal floor area	88.8 M.sq/902 Sq.ft	